

Recombinant Human ILVBL Protein, Myc/DDK-tagged, C13 and N15-labeled

Cat. No. ILVBL-5298H Lot. No. (See product label)

SPECIFICATION

| | |
|-------------------------|--|
| Product Overview | ILVBL MS Standard C13 and N15-labeled recombinant protein (NP_006835) with a C-terminal MYC/DDK tag, was expressed in HEK293 cells. |
| Species | Human |
| Source | HEK293 |
| Description | The protein encoded by this gene shares similarity with several thiamine pyrophosphate-binding proteins identified in bacteria, yeast, and plants. The highest degree of similarity is found with bacterial acetolactate synthases (AHAS), which are enzymes that catalyze the first step in branched-chain amino acid biosynthesis. |
| Molecular Mass | 67.9 kDa |
| AA Sequence | METPAAAAPAGSLFPSFLLACGTLVAALLGAAHRLGLFYQLLHKVDKASVRHGGEN VAAVLRAGHVRFIFTLVGGHISPLLVACEKLGIRVVDTRHEVTAVFAADAMARLSGTV GVAAVTAGPGLTNTVTAVKNAQMAQSPILLGGAASTLLQNRGALQAVDQLSLFRPL CKFCVSVRRVRDIVPTLRAAMAAAQSGTGPVVFVLPVDVLYPYFMVQKEMVPAKP PKGLVGRVSWYLENYLANLFAGAWEPQPEGPLPLDIPQASPQQVQRCVEILSRAK RPLMVLGSQALLTPTSADKLRAAVETLGVPCFLGGMARGLLGRNHPLHIRENRSAL KKADVIVLAGTVCDFRLSYGRVLSHSSKIIIVNRNREEMLLNSDIFWKPQEAVQGDVG SFVLKLV EGLQGQTWAPDWVEELREADRQKEQTFREKAAMPVAQHLNPVQVLQLV EETLPDNSILVVDGGDFVGTAAHLVQPRGPLRWLDPGAFGTLGVGAGFALGAKLCR |

Tel: 1-631-559-9269 1-516-512-3133

Email: info@creative-biomart.com Fax: 1-631-938-8127

45-1 Ramsey Road, Shirley, NY 11967, USA

PDAEVWCLFGDGAFGYSLIEFDTFVRHKIPVMALVGNDAGWTQISREQVPSLGSNV
 ACGLAYTDYHKAAMGLGARGLLLSRENEDQVVKVLHDAQQCRCRDGHPVVVNILIGR
 TDFRDGSIAVTRTRPLEQKLISEEDLAANDILDYKDDDDKV

Purity > 80% as determined by SDS-PAGE and Coomassie blue staining

Stability Stable for 3 months from receipt of products under proper storage and handling conditions.

Storage Store at -80 centigrade. Avoid repeated freeze-thaw cycles.

Concentration 50 µg/mL as determined by BCA

Storage Buffer 100 mM glycine, 25 mM Tris-HCl, pH 7.3.

GENE INFORMATION

Gene Name [ILVBL ilvB acetolactate synthase like \[Homo sapiens \(human\) \]](#)

Official Symbol [ILVBL](#)

Synonyms ILVBL; ilvB (bacterial acetolactate synthase)-like; acetolactate synthase-like protein; 209L8; acetolactate synthase homolog; AHAS; FLJ39061; ILV2H; MGC1269; MGC19535; ilvB-like protein;

Gene ID [10994](#)

mRNA Refseq [NM_006844](#)

Protein Refseq [NP_006835](#)

 Tel: 1-631-559-9269 1-516-512-3133

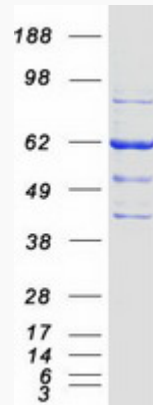
 Email: info@creative-biomart.com  Fax: 1-631-938-8127

 45-1 Ramsey Road, Shirley, NY 11967, USA

MIM 605770

UniProt ID A1L0T0

SDS-PAGE



 Tel: 1-631-559-9269 1-516-512-3133

 Email: info@creative-biomart.com  Fax: 1-631-938-8127

 45-1 Ramsey Road, Shirley, NY 11967, USA