

Recombinant Human IMMP2L Protein (38-175aa), N-His-tagged

Cat. No. IMMP2L-18H Lot. No. (See product label)

SPECIFICATION

Product Overview	Recombinant human IMMP2L protein (38-175aa), fused to His-tag at N-terminus, was expressed in E. coli and purified by using conventional chromatography techniques.
Species	Human
Source	E.coli
ProteinLength	38-175aa
Description	This gene encodes a protein involved in processing the signal peptide sequences used to direct mitochondrial proteins to the mitochondria. The encoded protein resides in the mitochondria and is one of the necessary proteins for the catalytic activity of the mitochondrial inner membrane peptidase (IMP) complex. Two variants that encode the same protein have been described for this gene.
Form	Liquid
Molecular Mass	18 kDa (161aa) confirmed by MALDI-TOF
AA Sequence	MGSSHHHHHHSSGLVPRGSHMGSRVEGASMQPSLNPGGSQSSDVLLNHWKVR NFEVHRGDIVSLVSPKNPEQKIIKRIVALEGDIVRTIGHKNRYVKVPRGHIWVEGDHH GHSFDSNSFGPVSLGLLHAHATHILWPPERWQKLESVLPPELPPVQREEE
Purity	> 95% by SDS-PAGE

 Tel: 1-631-559-9269 1-516-512-3133

 Email: info@creative-biomart.com  Fax: 1-631-938-8127

 45-1 Ramsey Road, Shirley, NY 11967, USA

Applications	SDS-PAGE
Notes	For research use only. This product is not intended or approved for human, diagnostics or veterinary use.
Storage	Can be stored at +2 to +8 centigrade for 1 week. For long term storage, aliquot and store at -20 to -80 centigrade. Avoid repeated freezing and thawing cycles.
Concentration	0.5 mg/mL (determined by Bradford assay)
Storage Buffer	20mM Tris-HCl buffer (pH 8.0) containing 0.15M NaCl, 50% glycerol, 1mM DTT

GENE INFORMATION

Gene Name	IMMP2L IMP2 inner mitochondrial membrane peptidase-like (<i>S. cerevisiae</i>) [<i>Homo sapiens</i> (human)]
Official Symbol	IMMP2L
Synonyms	IMMP2L; IMP2 inner mitochondrial membrane peptidase-like (<i>S. cerevisiae</i>); IMP2 inner mitochondrial membrane protease like (<i>S. cerevisiae</i>); mitochondrial inner membrane protease subunit 2; IMP2; inner mitochondrial membrane peptidase 2 like; IMP2-LIKE;
Gene ID	83943
mRNA Refseq	NM_001244606
Protein Refseq	NP_001231535
MIM	605977

 Tel: 1-631-559-9269 1-516-512-3133

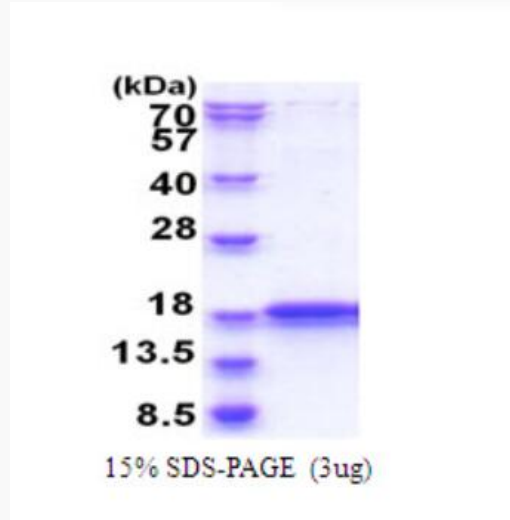
 Email: info@creative-biomart.com  Fax: 1-631-938-8127

 45-1 Ramsey Road, Shirley, NY 11967, USA

UniProt ID

Q96T52

SDS-PAGE



3 μ g by SDS-PAGE under reducing condition and visualized by coomassie blue stain

 Tel: 1-631-559-9269 1-516-512-3133

 Email: info@creative-biomart.com  Fax: 1-631-938-8127

 45-1 Ramsey Road, Shirley, NY 11967, USA