

## Recombinant Human IMMP2L Protein, GST-tagged

Cat. No. IMMP2L-5152H Lot. No. (See product label)

### SPECIFICATION

<b>Product Overview</b>	Human IMMP2L partial ORF ( NP_115938, 31 a.a. - 102 a.a.) recombinant protein with GST-tag at N-terminal.
<b>Species</b>	Human
<b>Source</b>	Wheat Germ
<b>Description</b>	The mitochondrial inner membrane peptidase (IMP) complex generates mature, active proteins in the mitochondrial intermembrane space by proteolytically removing the mitochondrial targeting presequence of nuclear-encoded proteins. IMP1 (IMMP1L; MIM 612323) and IMP2 are the catalytic subunits of the IMP complex (Burri et al., 2005 [PubMed 15814844]).[supplied by OMIM
<b>Molecular Mass</b>	33.66 kDa
<b>AA Sequence</b>	DRVACVARVEGASMQPSLNPGGSQSSDVLLNHWKVRNFEVHRGDIVSLVSPKNP EQKIIKRVIALEGDIVR
<b>Applications</b>	Enzyme-linked Immunoabsorbent Assay Western Blot (Recombinant protein) Antibody Production Protein Array
<b>Notes</b>	Best use within three months from the date of receipt of this protein.

 Tel: 1-631-559-9269 1-516-512-3133

 Email: [info@creative-biomart.com](mailto:info@creative-biomart.com)  Fax: 1-631-938-8127

 45-1 Ramsey Road, Shirley, NY 11967, USA

**Storage** Store at -80 centigrade. Aliquot to avoid repeated freezing and thawing.

**Storage Buffer** 50 mM Tris-HCl, 10 mM reduced Glutathione, pH=8.0 in the elution buffer.

## GENE INFORMATION

**Gene Name** [IMMP2L](#) [IMP2 inner mitochondrial membrane peptidase-like \(S. cerevisiae\)](#) [ [Homo sapiens](#) ]

**Official Symbol** [IMMP2L](#)

**Synonyms** [IMMP2L](#); [IMP2 inner mitochondrial membrane peptidase-like \(S. cerevisiae\)](#); [IMP2 inner mitochondrial membrane protease like \(S. cerevisiae\)](#); [mitochondrial inner membrane protease subunit 2](#); [IMP2](#); [inner mitochondrial membrane peptidase 2 like](#); [IMP2-LIKE](#);

**Gene ID** [83943](#)

**mRNA Refseq** [NM\\_001244606](#)

**Protein Refseq** [NP\\_001231535](#)

**MIM** [605977](#)

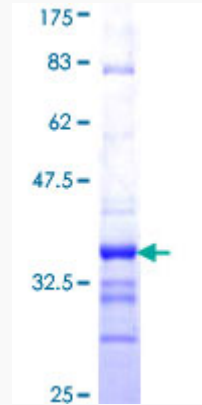
**UniProt ID** [Q96T52](#)

 Tel: 1-631-559-9269 1-516-512-3133

 Email: [info@creative-biomart.com](mailto:info@creative-biomart.com)  Fax: 1-631-938-8127

 45-1 Ramsey Road, Shirley, NY 11967, USA

**Quality Control  
Testing**



12.5% SDS-PAGE Stained with Coomassie Blue

 Tel: 1-631-559-9269 1-516-512-3133

 Email: [info@creative-biomart.com](mailto:info@creative-biomart.com)  Fax: 1-631-938-8127

 45-1 Ramsey Road, Shirley, NY 11967, USA