

## Recombinant Human IMPACT Protein, GST-tagged

Cat. No. IMPACT-5142H Lot. No. (See product label)

### SPECIFICATION

<b>Product Overview</b>	Human IMPACT full-length ORF ( AAH34016, 1 a.a. - 320 a.a.) recombinant protein with GST-tag at N-terminal.
<b>Species</b>	Human
<b>Source</b>	Wheat Germ
<b>Description</b>	IMPACT (Impact RWD Domain Protein) is a Protein Coding gene. Diseases associated with IMPACT include Spinocerebellar Ataxia 28 and Spastic Paraplegia 7, Autosomal Recessive.
<b>Molecular Mass</b>	60.83 kDa
<b>AA Sequence</b>	<p>MAEGDAGSDQRQNEEIEAMAAIYGEEWCVIDDCAKIFCIRISDDIDDPKWTLCLQVM            LPNEYPGTAPPIYQLNAPWLKQERADLSNSLEEIYIQNIGESILYLWVEKIRDVLIQK            SQMTEPGPDVKKKTEEEDVECEDDLILACQPESVVKALDFDISETRTEVEVEELPPID            HGIPITDRRSTFQAHLAPVVCVKQVVMVLSKLYENKKIASATHNIYAYRIYCEDKQFTL            QDCEDDGETAAGGRLLHLMELNVKNVMVVSRWYGGILLGPDRFKHINNCARNILV            EKNYTN SPEESSKALGKNKKVRKDKKRNEH</p>
<b>Applications</b>	<p>Enzyme-linked Immunoabsorbent Assay            Western Blot (Recombinant protein)            Antibody Production            Protein Array</p>

 Tel: 1-631-559-9269 1-516-512-3133

 Email: [info@creative-biomart.com](mailto:info@creative-biomart.com)  Fax: 1-631-938-8127

 45-1 Ramsey Road, Shirley, NY 11967, USA

<b>Notes</b>	Best use within three months from the date of receipt of this protein.
<b>Storage</b>	Store at -80 centigrade. Aliquot to avoid repeated freezing and thawing.
<b>Storage Buffer</b>	50 mM Tris-HCl, 10 mM reduced Glutathione, pH=8.0 in the elution buffer.

## GENE INFORMATION

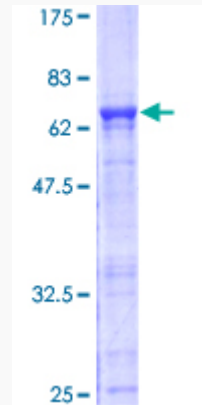
<b>Gene Name</b>	IMPACT Impact homolog (mouse) [ Homo sapiens ]
<b>Official Symbol</b>	IMPACT
<b>Synonyms</b>	IMPACT; Impact homolog (mouse); protein IMPACT; imprinted and ancient gene protein homolog; MGC33718;
<b>Gene ID</b>	55364
<b>mRNA Refseq</b>	NM_018439
<b>Protein Refseq</b>	NP_060909
<b>UniProt ID</b>	Q9P2X3

 Tel: 1-631-559-9269 1-516-512-3133

 Email: [info@creative-biomart.com](mailto:info@creative-biomart.com)  Fax: 1-631-938-8127

 45-1 Ramsey Road, Shirley, NY 11967, USA

**Quality Control  
Testing**



12.5% SDS-PAGE Stained with Coomassie Blue

 Tel: 1-631-559-9269 1-516-512-3133

 Email: [info@creative-biomart.com](mailto:info@creative-biomart.com)  Fax: 1-631-938-8127

 45-1 Ramsey Road, Shirley, NY 11967, USA