

# Recombinant Human IMPACT Protein, Myc/DDK-tagged, C13 and N15-labeled

**Cat. No.** IMPACT-6394H    **Lot. No.** (See product label)

## SPECIFICATION

<b>Product Overview</b>	IMPACT MS Standard C13 and N15-labeled recombinant protein (NP_060909) with a C-terminal MYC/DDK tag, was expressed in HEK293 cells.
<b>Species</b>	Human
<b>Source</b>	HEK293
<b>Description</b>	IMPACT (Impact RWD Domain Protein) is a Protein Coding gene. Diseases associated with IMPACT include Retrograde Amnesia and Anterograde Amnesia.
<b>Molecular Mass</b>	36.5 kDa
<b>AA Sequence</b>	<p>MAEGDAGSDQRQNEEIEAMAAIYGEEWCVIDDCAKIFCIRISDDIDDPKWTLCLQVM  LPNEYPGTAPPIYQLNAPWLKGQERADLSNSLEEIYIQNIGESILYLWVEKIRDVLIQK  SQMTEPGPDVKKKTEEEDVECEDDLILACQPESVVKALDFDISETRTEVEVEELPPID  HGIPITDRRSTFQAHLAPVVCPKQVKMVLSKLYENKKIASATHNIYAYRIYCEDKQTF  LQDCEDDGETAAGGRLLHLMEILNVKNVMVVVSRWYGGILLGPDRFKHINNCARNILV  EKNYTNSPEESSKALGKNKKVRKDKKRNEHTRTRPLEQKLISEEDLAANDILDYKDD  DDKV</p>
<b>Purity</b>	> 80% as determined by SDS-PAGE and Coomassie blue staining
<b>Stability</b>	Stable for 3 months from receipt of products under proper storage and handling conditions.

 Tel: 1-631-559-9269    1-516-512-3133

 Email: [info@creative-biomart.com](mailto:info@creative-biomart.com)     Fax: 1-631-938-8127

 45-1 Ramsey Road, Shirley, NY 11967, USA

<b>Storage</b>	Store at -80 centigrade. Avoid repeated freeze-thaw cycles.
----------------	---

<b>Concentration</b>	50 µg/mL as determined by BCA
----------------------	-------------------------------

<b>Storage Buffer</b>	100 mM glycine, 25 mM Tris-HCl, pH 7.3.
-----------------------	---

## GENE INFORMATION

<b>Gene Name</b>	IMPACT impact RWD domain protein [ Homo sapiens (human) ]
------------------	---

<b>Official Symbol</b>	IMPACT
------------------------	--------

<b>Synonyms</b>	IMPACT; Impact homolog (mouse); protein IMPACT; imprinted and ancient gene protein homolog; MGC33718;
-----------------	---

<b>Gene ID</b>	55364
----------------	-------

<b>mRNA Refseq</b>	NM_018439
--------------------	-----------

<b>Protein Refseq</b>	NP_060909
-----------------------	-----------

<b>MIM</b>	615319
------------	--------

<b>UniProt ID</b>	Q9P2X3
-------------------	--------

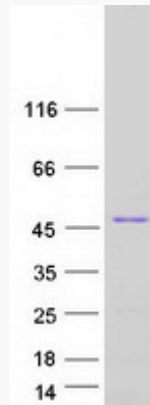
 Tel: 1-631-559-9269 1-516-512-3133

 Email: [info@creative-biomart.com](mailto:info@creative-biomart.com)  Fax: 1-631-938-8127

 45-1 Ramsey Road, Shirley, NY 11967, USA



SDS-PAGE



Tel: 1-631-559-9269 1-516-512-3133

Email: [info@creative-biomart.com](mailto:info@creative-biomart.com) Fax: 1-631-938-8127

45-1 Ramsey Road, Shirley, NY 11967, USA