

## Recombinant Human IMPAD1 Protein, GST-tagged

Cat. No. IMPAD1-5141H Lot. No. (See product label)

### SPECIFICATION

<b>Product Overview</b>	Human IMPAD1 full-length ORF ( AAH17797.1, 1 a.a. - 359 a.a.) recombinant protein with GST-tag at N-terminal.
<b>Species</b>	Human
<b>Source</b>	Wheat Germ
<b>Description</b>	This gene encodes a member of the inositol monophosphatase family. The encoded protein is localized to the Golgi apparatus and catalyzes the hydrolysis of phosphoadenosine phosphate (PAP) to adenosine monophosphate (AMP). Mutations in this gene are a cause of GRAPP type chondrodysplasia with joint dislocations, and a pseudogene of this gene is located on the long arm of chromosome 1. [provided by RefSeq, Dec 2011]
<b>Molecular Mass</b>	65.1 kDa
<b>AA Sequence</b>	MAPMGIRLSPLGVAVFCLLGLGVLYHLYSGFLAGRFSLFGLGGEPGGGAAGPAAAA DGGTVDLREMLAVSVLAAVRRGGDEVRRVRESNVLHEKSKGKTREGAEDKMTSGDV LSNRKMFYLLKTAFPSVQINTEEHVDAADQEVLWDHKIPEDILKEVTPKEVPAESVT VWIDPLDATQEYTEDLRKYVTTMVCVAVNGKPMLGVIHKPFSEYTAWAMVDGGSNV KARSSYNEKTPRIVSRSHSGMVKQVALQTFGNQTTIIPAGGAGYKVLALLDVPDKS QEKADLYIHVTYIKKWDICAGNAILKALGGHMTTSLSGEEISYTGSDGIEGGLLASIRMN HQALVRKLPDLEKTGHK
<b>Applications</b>	Enzyme-linked Immunoabsorbent Assay

 Tel: 1-631-559-9269 1-516-512-3133

 Email: [info@creative-biomart.com](mailto:info@creative-biomart.com)  Fax: 1-631-938-8127

 45-1 Ramsey Road, Shirley, NY 11967, USA

Western Blot (Recombinant protein)  
 Antibody Production  
 Protein Array

<b>Notes</b>	Best use within three months from the date of receipt of this protein.
<b>Storage</b>	Store at -80 centigrade. Aliquot to avoid repeated freezing and thawing.
<b>Storage Buffer</b>	50 mM Tris-HCl, 10 mM reduced Glutathione, pH=8.0 in the elution buffer.

## GENE INFORMATION

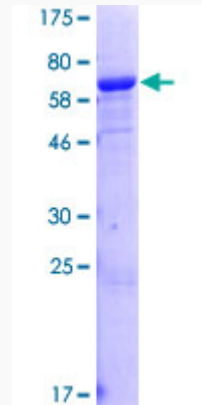
<b>Gene Name</b>	<a href="#">IMPAD1 inositol monophosphatase domain containing 1 [ Homo sapiens ]</a>
<b>Official Symbol</b>	<a href="#">IMPAD1</a>
<b>Synonyms</b>	IMPAD1; inositol monophosphatase domain containing 1; inositol monophosphatase 3; FLJ20421; IMPA3; IMPase 3; golgi-resident PAP phosphatase; myo-inositol monophosphatase A3; inositol-1(or 4)-monophosphatase 3; inositol monophosphatase domain-containing protein 1; Golgi 3-prime phosphoadenosine 5-prime phosphate 3-prime phosphatase; GPAPP; IMP 3; IMP-3;
<b>Gene ID</b>	<a href="#">54928</a>
<b>mRNA Refseq</b>	<a href="#">NM_017813</a>
<b>Protein Refseq</b>	<a href="#">NP_060283</a>
<b>MIM</b>	<a href="#">614010</a>
<b>UniProt ID</b>	<a href="#">Q9NX62</a>

 Tel: 1-631-559-9269 1-516-512-3133

 Email: [info@creative-biomart.com](mailto:info@creative-biomart.com)  Fax: 1-631-938-8127

 45-1 Ramsey Road, Shirley, NY 11967, USA

**Quality Control  
Testing**



12.5% SDS-PAGE Stained with Coomassie Blue

 Tel: 1-631-559-9269 1-516-512-3133

 Email: [info@creative-biomart.com](mailto:info@creative-biomart.com)  Fax: 1-631-938-8127

 45-1 Ramsey Road, Shirley, NY 11967, USA