

Recombinant Human IMPDH1 protein, His-tagged

Cat. No. IMPDH1-280H Lot. No. (See product label)

SPECIFICATION

| | |
|-------------------------|--|
| Product Overview | Recombinant Human IMPDH1 protein(170-235 aa), fused with N-terminal His tag, was expressed in E.coli. |
| Species | Human |
| Source | E.coli |
| ProteinLength | 170-235 aa |
| Form | The purified protein was lyophilized from sterile phosphate-buffered saline (PBS: 58 mM Na ₂ HPO ₄ , 17 mM NaH ₂ PO ₄ , 68 mM NaCl, pH 7.4). Prior to lyophilization, 5% (w/v) trehalose and 5% (w/v) mannitol were incorporated as cryoprotective excipients. The protein was eluted with a buffer containing 300 mM imidazole. |
| AASequence | LSPSHTVGDVLEAKMRHGFSGIPITETGTMGSKLVGIVTSRDIDFLAEKDHTLLSEV MTPRIELV |
| Purity | 85%, by SDS-PAGE with Coomassie Brilliant Blue staining. |
| Storage | Store at 2-8°C for 1-2 weeks. Aliquot and store at -20°C to -80°C for up to 3 months, reconstitution with sterile water and addition of an equal volume of glycerol. Avoid repeat freeze-thaw cycles. |
| Reconstitution | Dissolve the product in 200 µl sterile water to achieve a working concentration of 0.25 g/ |

 Tel: 1-631-559-9269 1-516-512-3133

 Email: info@creative-biomart.com  Fax: 1-631-938-8127

 45-1 Ramsey Road, Shirley, NY 11967, USA

µl. If experimental compatibility allows, mix the aqueous solution with an equal volume of glycerol (1:1 ratio) after initial reconstitution.

GENE INFORMATION

Gene Name [IMPDH1 IMP \(inosine 5-monophosphate\) dehydrogenase 1 \[Homo sapiens \]](#)

Official Symbol [IMPDH1](#)

Synonyms [IMPDH1](#); [IMP \(inosine 5-monophosphate\) dehydrogenase 1](#); [IMP \(inosine monophosphate\) dehydrogenase 1](#) , [retinitis pigmentosa 10 \(autosomal dominant\)](#) , [RP10](#); [inosine-5-monophosphate dehydrogenase 1](#); [LCA11](#); [sWSS2608](#); [IMPD 1](#); [IMPDH 1](#); [IMPDH-I](#); [IMP dehydrogenase 1](#); [IMP \(inosine monophosphate\) dehydrogenase 1](#); [IMPD](#); [RP10](#); [IMPD1](#); [DKFZp781N0678](#);

Gene ID [3614](#)

mRNA Refseq [NM_000883](#)

Protein Refseq [NP_000874](#)

MIM [146690](#)

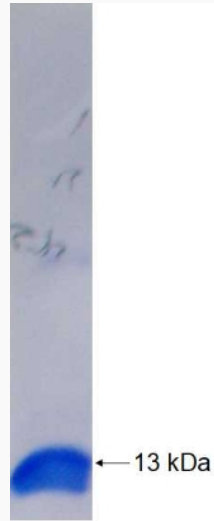
UniProt ID [P20839](#)

 Tel: 1-631-559-9269 1-516-512-3133

 Email: info@creative-biomart.com  Fax: 1-631-938-8127

 45-1 Ramsey Road, Shirley, NY 11967, USA

SDS-PAGE



 Tel: 1-631-559-9269 1-516-512-3133

 Email: info@creative-biomart.com  Fax: 1-631-938-8127

 45-1 Ramsey Road, Shirley, NY 11967, USA