

Recombinant Human IMPDH1 Protein, Myc/DDK-tagged, C13 and N15-labeled

Cat. No. IMPDH1-4548H Lot. No. (See product label)

SPECIFICATION

Product Overview

IMPDH1 MS Standard C13 and N15-labeled recombinant protein (NP_000874) with a C-terminal MYC/DDK tag, was expressed in HEK293 cells.

Species

Human

Source

HEK293

Description

The protein encoded by this gene acts as a homotetramer to regulate cell growth. The encoded protein is an enzyme that catalyzes the synthesis of xanthine monophosphate (XMP) from inosine-5'-monophosphate (IMP). This is the rate-limiting step in the de novo synthesis of guanine nucleotides. Defects in this gene are a cause of retinitis pigmentosa type 10 (RP10). Several transcript variants encoding different isoforms have been found for this gene.

Molecular Mass

64.1 kDa

AA Sequence

MEGPLTPPPLQGGGAAAVPEPGARQHHPGHETAAQRY SARLLQAGYEPESPRDLA
 THPTTTPRSELSSVLLAGVGVQMDRLRRASMADYLISGGTGYVPEDGLTAQQLFAS
 ADGLTYNDFLILPGFIDFIADEVDLTSALTRKITLKTPLISSPMDTVTEADMAIAMALMG
 GIGFIIHNCTPEFQANEVRKVKKFEQGFITDPVVLSPSHTVGDVLEAKMRHGFSGIPI
 TETGTMGSKLVGIVTSRDIDFLAEKDHTLLSEVMTPRIELVVAPAGVTLKEANEILQR
 SKKGKLPVNDCELVAIARTDLKKNRDYPLASKDSQKQLLCGAAVGTREDDKYRL
 DLLTQAGVDVIVLDSSQGN SVYQIAMVHYIKQKYPHLQVIGGNVVTAAQAKNLIDAGV

 Tel: 1-631-559-9269 1-516-512-3133

 Email: info@creative-biomart.com  Fax: 1-631-938-8127

 45-1 Ramsey Road, Shirley, NY 11967, USA



DGLRVGMGCGSICITQEVMACGRPQGTAVYKVAEYARRFGVPIIADGGIQTVGHVV
KALALGASTVMMGSLLAATTEAPGEYFFSDGVRLKKYRGMGSLDAMEKSSSSQKR
YFSEGDKVKIAQGVSGSIQDKGSIQKFVPYLIAGIQHGCQDIGARSLSVLRSMMYSG
ELKFEKRTMSAQIEGGVHGLHSYEKRLYTRTRPLEQKLISEEDLAANDILDYKDDDDK
V

Purity > 80% as determined by SDS-PAGE and Coomassie blue staining

Stability Stable for 3 months from receipt of products under proper storage and handling conditions.

Storage Store at -80 centigrade. Avoid repeated freeze-thaw cycles.

Concentration 50 µg/mL as determined by BCA

Storage Buffer 100 mM glycine, 25 mM Tris-HCl, pH 7.3.

GENE INFORMATION

Gene Name IMPDH1 inosine monophosphate dehydrogenase 1 [Homo sapiens (human)]

Official Symbol IMPDH1

Synonyms IMPDH1; IMP (inosine 5-monophosphate) dehydrogenase 1; IMP (inosine monophosphate) dehydrogenase 1, retinitis pigmentosa 10 (autosomal dominant), RP10; inosine-5-monophosphate dehydrogenase 1; LCA11; sWSS2608; IMPD 1; IMPDH 1; IMPDH-I; IMP dehydrogenase 1; IMP (inosine monophosphate) dehydrogenase 1; IMPD; RP10; IMPD1; DKFZp781N0678;

Gene ID 3614

Tel: 1-631-559-9269 1-516-512-3133

Email: info@creative-biomart.com Fax: 1-631-938-8127

45-1 Ramsey Road, Shirley, NY 11967, USA

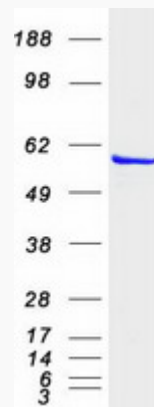
mRNA Refseq [NM_000883](#)

Protein Refseq [NP_000874](#)

MIM [146690](#)

UniProt ID [P20839](#)

SDS-PAGE



 Tel: 1-631-559-9269 1-516-512-3133

 Email: info@creative-biomart.com  Fax: 1-631-938-8127

 45-1 Ramsey Road, Shirley, NY 11967, USA