

## Active Recombinant Human IMPDH2 Protein, His tagged

Cat. No. IMPDH2-01H Lot. No. (See product label)

### SPECIFICATION

<b>Product Overview</b>	Recombinant Human IMPDH2 Protein with His tag was expressed in Baculovirus-Insect Cells.
<b>Species</b>	Human
<b>Source</b>	Insect Cells
<b>Description</b>	This gene encodes the rate-limiting enzyme in the de novo guanine nucleotide biosynthesis. It is thus involved in maintaining cellular guanine deoxy- and ribonucleotide pools needed for DNA and RNA synthesis. The encoded protein catalyzes the NAD-dependent oxidation of inosine-5'-monophosphate into xanthine-5'-monophosphate, which is then converted into guanosine-5'-monophosphate. This gene is up-regulated in some neoplasms, suggesting it may play a role in malignant transformation.
<b>Bio-activity</b>	Measured by its ability to convert the substrate inosine 5' phosphate (IMP) to xanthosine 5' phosphate (XMP). The specific activity is 136 pmol/min/μg as measured under the described conditions.
<b>Molecular Mass</b>	The protein has a calculated MW of 57 kDa.
<b>AA Sequence</b>	MADYLISGGTSYVPDDGLTAQQLFNCGDGLTYNDFLILPGYIDFTADQVDLTSALTKK ITLKTPLVSSPMDTVTEAGMAIAMALTGGIGFIHHNCTPEFQANEVRKVKKYEQGFIT DPVVLSPKDRVRDVFEAKARHGFCGIPITDTGRMGSRVLGIISSRDIDFLKEEEHDCF LEEIMTKREDLVVAPAGITLKEANEILQRSKKGKLPVINEDDELVAIIARTDLKKNRDYP

 Tel: 1-631-559-9269 1-516-512-3133

 Email: [info@creative-biomart.com](mailto:info@creative-biomart.com)  Fax: 1-631-938-8127

 45-1 Ramsey Road, Shirley, NY 11967, USA

LASKDAKKQLLCGAAIGTHEDDKYRLDLLAQAGVDVVVLDSSQGNISIFQINMIKIYIKD  
 KYPNLQVIGGNVVTAAQAKNLIDAGVDALRVGMGSGSICITQEV LACGRPQATAVYK  
 VSEYARRFGVPVIADGGIQNVGHIKALALGASTVMMGSLLAATTEAPGEYFFSDGI  
 RLKKYRGMGSLDAMDKHLSSQNRYPSEADKIKVAQGVSGAVQDKGSIHKFVPYLIA  
 GIQHSCQDIGAKSLTQVRAMMYSGELKFEKRTSSAQVEGGVHSLHSYEKRLFHFFFH  
 HHHHHH

**Endotoxin** < 0.1 EU/μg by LAL

**Purity** > 90% by SDS-PAGE

**Storage** Store it under sterile conditions at -20 to -80 centigrade. It is recommended that the protein be aliquoted for optimal storage. Avoid repeated freeze-thaw cycles.

**Concentration** 0.33 mg/mL by Bradford

**Storage Buffer** Sterile 20 mM Tris, 0.5M NaCl, 10% glycerol, 2mM DTT, pH 8.0

## GENE INFORMATION

**Gene Name** IMPDH2 IMP (inosine 5-monophosphate) dehydrogenase 2 [ Homo sapiens ]

**Official Symbol** IMPDH2

**Synonyms** IMPDH2; IMP (inosine 5-monophosphate) dehydrogenase 2; inosine-5-monophosphate dehydrogenase 2; IMPD 2; IMPDH 2; IMP oxireductase 2; inosine 5 phosphate dehydrogenase 2; IMP (inosine monophosphate) dehydrogenase 2; inosine monophosphate dehydrogenase type II; IMPD2; IMPDH-II;

**Gene ID** 3615

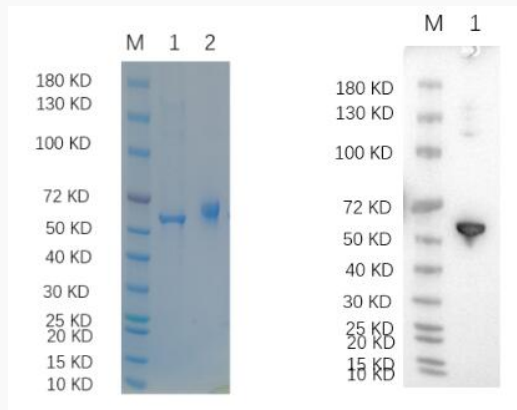
 Tel: 1-631-559-9269 1-516-512-3133

 Email: [info@creative-biomart.com](mailto:info@creative-biomart.com)  Fax: 1-631-938-8127

 45-1 Ramsey Road, Shirley, NY 11967, USA

mRNA Refseq	<a href="#">NM_000884</a>
Protein Refseq	<a href="#">NP_000875</a>
MIM	146691
UniProt ID	<a href="#">P12268</a>

**Reducing 12% SDS-PAGE (CBB stained) and WB (Anti-His Mouse Monoclonal Antibody) analysis profile of purified IMPDH2.**



1. IMPDH2
2. BSA

 Tel: 1-631-559-9269 1-516-512-3133

 Email: [info@creative-biomart.com](mailto:info@creative-biomart.com)  Fax: 1-631-938-8127

 45-1 Ramsey Road, Shirley, NY 11967, USA