

Recombinant Human IMPDH2 Protein, Myc/DDK-tagged, C13 and N15-labeled

Cat. No. IMPDH2-4161H **Lot. No.** (See product label)

SPECIFICATION

Product Overview	IMPDH2 MS Standard C13 and N15-labeled recombinant protein (NP_000875) with a C-terminal MYC/DDK tag, was expressed in HEK293 cells.
Species	Human
Source	HEK293
Description	This gene encodes the rate-limiting enzyme in the de novo guanine nucleotide biosynthesis. It is thus involved in maintaining cellular guanine deoxy- and ribonucleotide pools needed for DNA and RNA synthesis. The encoded protein catalyzes the NAD-dependent oxidation of inosine-5'-monophosphate into xanthine-5'-monophosphate, which is then converted into guanosine-5'-monophosphate. This gene is up-regulated in some neoplasms, suggesting it may play a role in malignant transformation.
Molecular Mass	55.8 kDa
AA Sequence	MADYLISGGTSSYVPDDGLTAQQLFNCGDGLTYNDFLILPGYIDFTADQVDLTSALTKK ITLKTPLVSSPMDTVTEAGMAIAMALTGGIGFIHHNCTPEFQANEVRKVKKYEQGFIT DPVVLSPKDRVRDVFEAKARHGFCGIPITDTGRMGSRVLGIISSRDIDFLKEEEHDCF LEEIMTKREDLVVAPAGITLKEANEILQRSKKGKLPVNEDELVAIIARTDLKKNRDYP LASKDAKKQLLCGAAIGTHEDDKYRLDLLAQAGVDVVLDSSQGNSIFQINMIKYIKD KYPNLQVIGGNVVTAAQAKNLIDAGVDALRVGMGSGSICITQEV LACGRPQATAVYK

 Tel: 1-631-559-9269 1-516-512-3133

 Email: info@creative-biomart.com  Fax: 1-631-938-8127

 45-1 Ramsey Road, Shirley, NY 11967, USA

VSEYARRFGVPVIADGGIQNVGHIKALALGASTVMMGSLLAATTEAPGEYFFSDGI
 RLKKYRGMGSLDAMDKHLSSQNRYPSEADKIKVAQGVSGAVQDKGSIHKFVPLYIA
 GIQHSCQDIGAKSLTQVRAMMYSGELKFEKRTSSAQVEGGVHSLHSYEKRLFTRTR
 PLEQKLISEEDLAANDILDYKDDDDKV

Purity > 80% as determined by SDS-PAGE and Coomassie blue staining

Stability Stable for 3 months from receipt of products under proper storage and handling conditions.

Storage Store at -80 centigrade. Avoid repeated freeze-thaw cycles.

Concentration 50 µg/mL as determined by BCA

Storage Buffer 100 mM glycine, 25 mM Tris-HCl, pH 7.3.

GENE INFORMATION

Gene Name [IMPDH2 inosine monophosphate dehydrogenase 2 \[Homo sapiens \(human\) \]](#)

Official Symbol [IMPDH2](#)

Synonyms IMPDH2; IMP (inosine 5-monophosphate) dehydrogenase 2; inosine-5-monophosphate dehydrogenase 2; IMPD 2; IMPDH 2; IMP oxireductase 2; inosine 5 phosphate dehydrogenase 2; IMP (inosine monophosphate) dehydrogenase 2; inosine monophosphate dehydrogenase type II; IMPD2; IMPDH-II;

Gene ID [3615](#)

mRNA Refseq [NM_000884](#)

 Tel: 1-631-559-9269 1-516-512-3133

 Email: info@creative-biomart.com  Fax: 1-631-938-8127

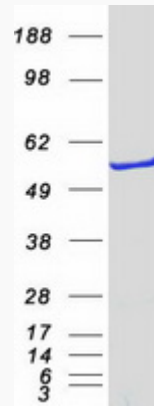
 45-1 Ramsey Road, Shirley, NY 11967, USA

Protein Refseq NP_000875

MIM 146691

UniProt ID P12268

SDS-PAGE



 Tel: 1-631-559-9269 1-516-512-3133

 Email: info@creative-biomart.com  Fax: 1-631-938-8127

 45-1 Ramsey Road, Shirley, NY 11967, USA