

Recombinant Human IMPDH2 Protein(5-514aa), GST-tagged

Cat. No. IMPDH2-439H Lot. No. (See product label)

SPECIFICATION

Product Overview	Recombinant Human IMPDH2 Protein(5-514aa)(P12268), fused with N-terminal GST tag, was expressed in E. coli.
Species	Human
Source	E.coli
ProteinLength	5-514aa
Form	If the delivery form is liquid, the default storage buffer is Tris/PBS-based buffer, 5%-50% glycerol. If the delivery form is lyophilized powder, the buffer before lyophilization is Tris/PBS-based buffer, 6% Trehalose, pH 8.0.
Molecular Mass	82.3kDa
AA Sequence	LISGGTSYVPDDGLTAQQLFNCGDGLTYNDFLILPGYIDFTADQVDLTSALTKKITLKT PLVSSPMDTVTEAGMAIAMALTGGIGIFHHNCTPEFQANEVRKVKKYEQGFITDPVV LSPKDRVRDVFEAKARHGFCGIPITDTGRMGSRVGISSRDIDFLKEEEHDCFLEEIM TKREDLVVAPAGITLKEANEILQRSKKGKLPVINEDDELVAIIARTDLKKNRDYPLASK DAKKQLLCGAAIGTHEDDKYRLDLLAQAGVDVVVLDSQQNSIFQINMIKIYKDKYPN LQVIGGNVVTAQAQKNLIDAGVDALRVGMGSGSICITQEV LACGRPQATAVYKVSEY ARRFGVPVIADGGIQNVGHIKALALGASTVMMGSLAATTEAPGEYFFSDGIRLKKY RGMGSLDAMDKHLSSQNRYFSEADKIKVAQGVSGAVQDKGSIHKFVPYLIAGIQHS CQDIGAKSLTQVRAMMYSGELKFEKRTSSAQVEGGVHSLHSYEKRLF

 Tel: 1-631-559-9269 1-516-512-3133

 Email: info@creative-biomart.com  Fax: 1-631-938-8127

 45-1 Ramsey Road, Shirley, NY 11967, USA

Purity	Greater than 90% as determined by SDS-PAGE.
Storage	Store at -20°C/-80°C upon receipt, aliquoting is necessary for mutiple use. Avoid repeated freeze-thaw cycles.
Reconstitution	It is recommended that sterile water be added to the vial to prepare a stock solution of 0.2 ug/ul. Centrifuge the vial at 4°C before opening to recover the entire contents.

GENE INFORMATION

Gene Name	IMPDH2 IMP (inosine 5-monophosphate) dehydrogenase 2 [Homo sapiens]
Official Symbol	IMPDH2
Synonyms	IMPDH2; IMP (inosine 5-monophosphate) dehydrogenase 2; inosine-5-monophosphate dehydrogenase 2; IMPD 2; IMPDH 2; IMP oxireductase 2; inosine 5 phosphate dehydrogenase 2; IMP (inosine monophosphate) dehydrogenase 2; inosine monophosphate dehydrogenase type II; IMPD2; IMPDH-II;
Gene ID	3615
mRNA Refseq	NM_000884
Protein Refseq	NP_000875
UniProt ID	P12268

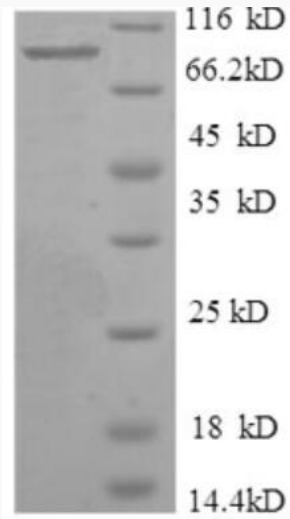
 Tel: 1-631-559-9269 1-516-512-3133

 Email: info@creative-biomart.com  Fax: 1-631-938-8127

 45-1 Ramsey Road, Shirley, NY 11967, USA



SDS-PAGE



Tel: 1-631-559-9269 1-516-512-3133

Email: info@creative-biomart.com Fax: 1-631-938-8127

45-1 Ramsey Road, Shirley, NY 11967, USA