

## Recombinant Mouse IMPDH2 Protein, His-tagged

Cat. No. IMPDH2-62M Lot. No. (See product label)

### SPECIFICATION

<b>Product Overview</b>	Recombinant Mouse IMPDH2 Protein, fused to His-tag, was expressed in E. coli.
<b>Species</b>	Mouse
<b>Source</b>	E.coli
<b>Description</b>	<p>Enables IMP dehydrogenase activity. Involved in 'de novo' XMP biosynthetic process and GMP biosynthetic process. Acts upstream of or within cellular response to interleukin-4; lymphocyte proliferation; and purine nucleotide biosynthetic process.</p> <p>Predicted to be located in cytosol and nucleus. Predicted to be active in cytoplasm. Is expressed in several structures, including alimentary system; brain; heart; respiratory system; and sensory organ. Orthologous to human IMPDH2 (inosine monophosphate dehydrogenase 2).</p>
<b>Form</b>	50mM Tris, 0.3 M NaCl, pH 8.0.
<b>Molecular Mass</b>	56.7kDa
<b>AA Sequence</b>	<p>MHHHHHMHADYLISGGTSYVPDDGLTAQQLFNCGDGLTYNDFLILPGYIDFTADQV  DLTSALTKKITLKTPLVSSPMDTVTEAGMAIAMALTGGIGFIHHNCTPEFQANEVRKV  KKYEQGFITDPVVLSPKDRVRDVFEAKARHGFCGIPITDTGRMGSRVLVGISSRDIDFL  KEEEHDRFLEEIMTKREDLVVAPAGVTLKEANEILQRSKKGKLPVNNENDELVAIIART  DLKKNRDYPLASKDAKKQLLCGAAIGTHEDDKYRLDLLALAGVDVVVLDSSQGNISIF  QINMIKYIKEKYPQLVIGGNVVTAQAQAKNLIDAGVDALRVGMGSGSICITQEVLACG  RPQATAVYKVFSEYARRFGVPVIADGGIQNVGHIKALALGASTVMMGSLLAATTEAP</p>

 Tel: 1-631-559-9269 1-516-512-3133

 Email: [info@creative-biomart.com](mailto:info@creative-biomart.com)  Fax: 1-631-938-8127

 45-1 Ramsey Road, Shirley, NY 11967, USA

GEYFFSDGIRLKKYRGMGSLDAMDKHLSSQNRYPSEADKIKVAQGVSGAVQDKGSI  
 HKFVPLYIAGIQHSCQDIGAKSLTQVRAMMYSGELKFEKRTSSAQVEGGVHSLHSYE  
 KRLF

**Purity** >90%

**Storage** Store it under sterile conditions at -20 to -80 centigrade. It is recommended that the protein be aliquoted for optimal storage. Avoid repeated freeze-thaw cycles.

**Concentration** 2.1 mg/mL

## GENE INFORMATION

**Gene Name** [Impdh2 inosine monophosphate dehydrogenase 2 \[ Mus musculus \(house mouse\) \]](#)

**Official Symbol** [IMPDH2](#)

**Synonyms** IMPD; IMPD 2; IMPDH-II

**Gene ID** [23918](#)

**mRNA Refseq** [NM\\_011830](#)

**Protein Refseq** [NP\\_035960](#)

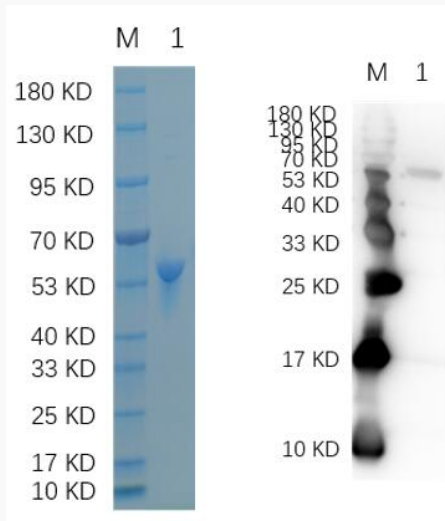
**UniProt ID** [P24547](#)

 Tel: 1-631-559-9269 1-516-512-3133

 Email: [info@creative-biomart.com](mailto:info@creative-biomart.com)  Fax: 1-631-938-8127

 45-1 Ramsey Road, Shirley, NY 11967, USA

**SDS-PAGE**



Reducing 12% SDS-PAGE and WB analysis profile of purified IMPDH2 (CBB stained).

 Tel: 1-631-559-9269 1-516-512-3133

 Email: [info@creative-biomart.com](mailto:info@creative-biomart.com)  Fax: 1-631-938-8127

 45-1 Ramsey Road, Shirley, NY 11967, USA