

Recombinant Human IMPG1 Protein, Myc/DDK-tagged, C13 and N15-labeled

Cat. No. IMPG1-867H **Lot. No.** (See product label)

SPECIFICATION

Product Overview	IMPG1 MS Standard C13 and N15-labeled recombinant protein (NP_001554) with a C-terminal MYC/DDK tag, was expressed in HEK293 cells.
Species	Human
Source	HEK293
Description	This gene encodes a protein that is a major component of the retinal interphotoreceptor matrix. The encoded protein is a proteoglycan that is thought to play a role in maintaining viability of photoreceptor cells and in adhesion of the neural retina to the retinal pigment epithelium. Alternate splicing results in multiple transcript variants.
Molecular Mass	89.4 kDa
AA Sequence	<p> MYLETRRAIFVFWIFLQVQGTKDISINIYHSETKDIDNPPRNETTESTEKMYKMSTMR RIFDLAKHRTRKSAFFPTGVKVCPEQSMKQILDSLQAYYRLRVCQEAVWEAYRIFLD RIPDTGEYQDWVSICQQETFCLFDIGKNFSNSQEHLDLLQQRKQRSFPDRKDEISA EKTLGEPGETIVISTDVANVSLGPFPLTPDDTLLNEILDNTLNDTKMPTTERETFAVL EEQRVELSVSLVNQKFKAEELADSQSPYYQELAGKSQQLQMOKIFKKLPGFKKIHVLGF RPKKEKDGSSSTEMQLTAIFKRHSAEAKSPASDLLSFDSNKIESEEVYHGTMEEDKQ PEIYLTATDLKRLISKALEEEQSLDVGTIQFTDEIAGSLPAFGPDTQSELPTSFAVITED ATLSPELPPVEPQLETVDGAEHGLPDTSWSPAMASTSLSEAPFFMASSIFSLTDQ </p>

 Tel: 1-631-559-9269 1-516-512-3133

 Email: info@creative-biomart.com  Fax: 1-631-938-8127

 45-1 Ramsey Road, Shirley, NY 11967, USA

GTTDTMATDQTMLVPGLTIPTSDYSAISQLALGISHPPASSDDSRSSAGGEDMVRDL
 DEMDLSDTAPAPSEVPELSEYVSPDHFLEDTPVSALQYITTSSMTIAPKGRELVVFF
 SLRVANMAFSNDLFNKSSLEYRALEQQFTQLLVPYLRSNLTGFKQLEILNFRNGSVIV
 NSKMKFAKSVPINLTKAVHGVLEDFRSAAAQQLHLEIDSYSLNIEPADQADPCKFLA
 CGEFAQCVKNEWTEEAECRCCKPGYDSQGSGLDGLPGLCGPGTKECEVLQGGKAP
 CRLPDHSENQAYKTSVKKFQNNKQNNKVISKRNSELLTVEYEEFNHQDWEGNTRTR
 PLEQKLISEEDLAANDILDYKDDDDKV

Purity > 80% as determined by SDS-PAGE and Coomassie blue staining

Stability Stable for 3 months from receipt of products under proper storage and handling conditions.

Storage Store at -80 centigrade. Avoid repeated freeze-thaw cycles.

Concentration 50 µg/mL as determined by BCA

Storage Buffer 100 mM glycine, 25 mM Tris-HCl, pH 7.3.

GENE INFORMATION

Gene Name [IMPG1 interphotoreceptor matrix proteoglycan 1 \[Homo sapiens \(human\) \]](#)

Official Symbol [IMPG1](#)

Synonyms IMPG1; interphotoreceptor matrix proteoglycan 1; sialoprotein associated with cones and rods, SPACR; GP147; IPM150; IPM-150; sialoprotein associated with cones and rods; interphotoreceptor matrix proteoglycan of 150 kDa; SPACR;

Gene ID [3617](#)

 Tel: 1-631-559-9269 1-516-512-3133

 Email: info@creative-biomart.com  Fax: 1-631-938-8127

 45-1 Ramsey Road, Shirley, NY 11967, USA

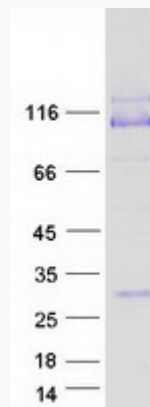
mRNA Refseq [NM_001563](#)

Protein Refseq [NP_001554](#)

MIM [602870](#)

UniProt ID [Q17R60](#)

SDS-PAGE



 Tel: 1-631-559-9269 1-516-512-3133

 Email: info@creative-biomart.com  Fax: 1-631-938-8127

 45-1 Ramsey Road, Shirley, NY 11967, USA