

Recombinant Human IMPG2 Protein, GST-tagged

Cat. No. IMPG2-5137H Lot. No. (See product label)

SPECIFICATION

Product Overview	Human IMPG2 partial ORF (NP_057331.2, 572 a.a. - 678 a.a.) recombinant protein with GST-tag at N-terminal.
Species	Human
Source	Wheat Germ
Description	Interphotoreceptor matrix proteoglycan-2 is part of an extracellular complex occupying the interface between photoreceptors and the retinal pigment epithelium in the fundus of the eye.[supplied by OMIM
Molecular Mass	37.51 kDa
AA Sequence	LTSKVKDQLKVSPFLPDASMEKELIFDGGLGSGSGQKVDLITWPWSETSSEKSAEPL SKPWLEDDDDSLLP AEIEDKKLVLVDKMDSTDQISKH SKYEHDDRSTHFPE
Applications	Enzyme-linked Immunoabsorbent Assay Western Blot (Recombinant protein) Antibody Production Protein Array
Notes	Best use within three months from the date of receipt of this protein.
Storage	Store at -80 centigrade. Aliquot to avoid repeated freezing and thawing.

 Tel: 1-631-559-9269 1-516-512-3133

 Email: info@creative-biomart.com  Fax: 1-631-938-8127

 45-1 Ramsey Road, Shirley, NY 11967, USA

Storage Buffer 50 mM Tris-HCl, 10 mM reduced Glutathione, pH=8.0 in the elution buffer.

GENE INFORMATION

Gene Name [IMPG2 interphotoreceptor matrix proteoglycan 2 \[Homo sapiens \(human\) \]](#)

Official Symbol [IMPG2](#)

Synonyms IMPG2; interphotoreceptor matrix proteoglycan 2; RP56; VMD5; IPM200; SPACRCAN; interphotoreceptor matrix proteoglycan 2; IPM 200; interphotoreceptor matrix proteoglycan IPM 200; interphotoreceptor matrix proteoglycan of 200 kDa; sialoprotein associated with cones and rods proteoglycan;

Gene ID [50939](#)

mRNA Refseq [NM_016247](#)

Protein Refseq [NP_057331](#)

MIM [607056](#)

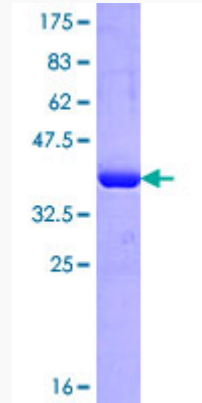
UniProt ID [Q9BZV3](#)

 Tel: 1-631-559-9269 1-516-512-3133

 Email: info@creative-biomart.com  Fax: 1-631-938-8127

 45-1 Ramsey Road, Shirley, NY 11967, USA

**Quality Control
Testing**



12.5% SDS-PAGE Stained with Coomassie Blue

 Tel: 1-631-559-9269 1-516-512-3133

 Email: info@creative-biomart.com  Fax: 1-631-938-8127

 45-1 Ramsey Road, Shirley, NY 11967, USA