

Recombinant Human INADL Protein, GST-tagged

Cat. No. INADL-5136H Lot. No. (See product label)

SPECIFICATION

Product Overview	Human INADL partial ORF (NP_733750, 545 a.a. - 651 a.a.) recombinant protein with GST-tag at N-terminal.
Species	Human
Source	Wheat Germ
Description	This gene encodes a protein with multiple PDZ domains. PDZ domains mediate protein-protein interactions, and proteins with multiple PDZ domains often organize multimeric complexes at the plasma membrane. This protein localizes to tight junctions and to the apical membrane of epithelial cells. A similar protein in Drosophila is a scaffolding protein which tethers several members of a multimeric signaling complex in photoreceptors. [provided by RefSeq
Molecular Mass	37.51 kDa
AA Sequence	TLDTQIADDAELQKYSKLLPIHTLRLGVEVDSFDGHHYISSIVSGGPVDTLGLLQPEDE LLEVNGMQLYGKSRREAVSFLKEVPPPFTLVCCRRLFDDEASVDEPRR
Applications	Enzyme-linked Immunoabsorbent Assay Western Blot (Recombinant protein) Antibody Production Protein Array
Notes	Best use within three months from the date of receipt of this protein.

 Tel: 1-631-559-9269 1-516-512-3133

 Email: info@creative-biomart.com  Fax: 1-631-938-8127

 45-1 Ramsey Road, Shirley, NY 11967, USA

Storage Store at -80 centigrade. Aliquot to avoid repeated freezing and thawing.

Storage Buffer 50 mM Tris-HCl, 10 mM reduced Glutathione, pH=8.0 in the elution buffer.

GENE INFORMATION

Gene Name [INADL InaD-like \(Drosophila\) \[Homo sapiens \]](#)

Official Symbol [INADL](#)

Synonyms INADL; InaD-like (Drosophila); inaD-like protein; Cipp; PATJ; PDZ domain protein; protein associated to tight junctions; channel-interacting PDZ domain protein; PALS1-associated tight junction protein; inactivation no after-potential D-like protein; hINADL; InaD-like; FLJ26982;

Gene ID [10207](#)

mRNA Refseq [NM_176877](#)

Protein Refseq [NP_795352](#)

MIM [603199](#)

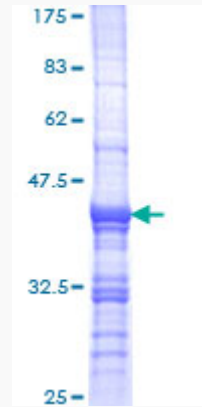
UniProt ID [Q8NI35](#)

 Tel: 1-631-559-9269 1-516-512-3133

 Email: info@creative-biomart.com  Fax: 1-631-938-8127

 45-1 Ramsey Road, Shirley, NY 11967, USA

**Quality Control
Testing**



12.5% SDS-PAGE Stained with Coomassie Blue

 Tel: 1-631-559-9269 1-516-512-3133

 Email: info@creative-biomart.com  Fax: 1-631-938-8127

 45-1 Ramsey Road, Shirley, NY 11967, USA