

## Recombinant Human ING1 Protein, His tagged

Cat. No. ING1-001H Lot. No. (See product label)

### SPECIFICATION

<b>Product Overview</b>	Recombinant Human ING1 Protein (213-327 aa) with His tag was expressed in E. coli.
<b>Species</b>	Human
<b>Source</b>	E.coli
<b>ProteinLength</b>	213-327 aa
<b>Description</b>	This gene encodes a tumor suppressor protein that can induce cell growth arrest and apoptosis. The encoded protein is a nuclear protein that physically interacts with the tumor suppressor protein TP53 and is a component of the p53 signaling pathway. Reduced expression and rearrangement of this gene have been detected in various cancers. Multiple alternatively spliced transcript variants encoding distinct isoforms have been reported.
<b>Molecular Mass</b>	14 kDa
<b>Purity</b>	> 90% by SDS-PAGE
<b>AA Sequence</b>	MLHCVQRALIRSQELGDEKIQIVSQMVELVENRTRQVDSHVELFEAQQELGDTAGN SGKAGADRPKGEEAAQADKPNSKRSRQRNNENRENASSNHDHDDGASGTPKEK KAKTSHHHHHHHH
<b>Endotoxin</b>	< 1.0 EU/μg by LAL

 Tel: 1-631-559-9269 1-516-512-3133

 Email: [info@creative-biomart.com](mailto:info@creative-biomart.com)  Fax: 1-631-938-8127

 45-1 Ramsey Road, Shirley, NY 11967, USA

<b>Storage</b>	Store it under sterile conditions at -20 to -80 centigrade. It is recommended that the protein be aliquoted for optimal storage. Avoid repeated freeze-thaw cycles.
<b>Storage Buffer</b>	Sterile PBS, pH8.2, 8% Trehalose, 10% Glycerol
<b>Concentration</b>	1 mg/mL by BCA

## GENE INFORMATION

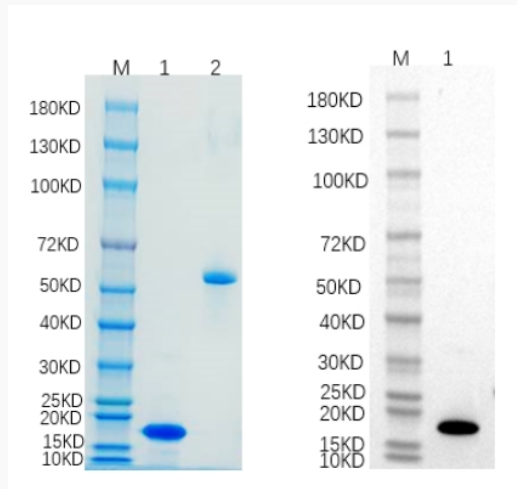
<b>Gene Name</b>	ING1 inhibitor of growth family member 1 [ Homo sapiens (human) ]
<b>Official Symbol</b>	ING1
<b>Synonyms</b>	ING1; inhibitor of growth family, member 1; inhibitor of growth protein 1; growth inhibitor ING1; growth inhibitory protein ING1; inhibitor of growth 1; p24ING1c; p33; p33ING1; p33ING1b; p47; p47ING1a; tumor suppressor ING1
<b>Gene ID</b>	3621
<b>mRNA Refseq</b>	NM_005537
<b>Protein Refseq</b>	NP_005528
<b>MIM</b>	601566
<b>UniProt ID</b>	Q9UK53

 Tel: 1-631-559-9269 1-516-512-3133

 Email: [info@creative-biomart.com](mailto:info@creative-biomart.com)  Fax: 1-631-938-8127

 45-1 Ramsey Road, Shirley, NY 11967, USA

**SDS-PAGE and WB**



Reducing 4%-20% SDS-PAGE (CBB stained) and WB (Anti-His Mouse Monoclonal antibody) analysis profiles of purified ING1. 1. ING1: 1  $\mu$ g 2. BSA: 1  $\mu$ g

 Tel: 1-631-559-9269 1-516-512-3133

 Email: [info@creative-biomart.com](mailto:info@creative-biomart.com)  Fax: 1-631-938-8127

 45-1 Ramsey Road, Shirley, NY 11967, USA