

Recombinant Human ING1 Protein, GST-tagged

Cat. No. ING1-5132H Lot. No. (See product label)

SPECIFICATION

Product Overview	Human ING1 full-length ORF (NP_937862.1, 1 a.a. - 279 a.a.) recombinant protein with GST-tag at N-terminal.
Species	Human
Source	Wheat Germ
Description	This gene encodes a tumor suppressor protein that can induce cell growth arrest and apoptosis. The encoded protein is a nuclear protein that physically interacts with the tumor suppressor protein TP53 and is a component of the p53 signaling pathway. Reduced expression and rearrangement of this gene have been detected in various cancers. Multiple alternatively spliced transcript variants encoding distinct isoforms have been reported. [provided by RefSeq]
Molecular Mass	58.3 kDa
AA Sequence	MLSPANGEQLHLVNYVEDYLDIESLPFDLQRNVSLMREIDAKYQEILKELDECYERF SRETDGAQKRRMLHCVQRALIRSQELGDEKIQIVSQMVELVENRTRQVDSHVELFE AQQELGDTAGNSGKAGADRPKGEAAAQADKPNKRSRRQRNNENRENASSNHDH DDGASGTPKEKKAKTSKKKKRSKAKAEREASPADLPIDPNEPTYCLCNQVSYGEMI GCDNDECPIEWFHFSCVGLNHKPKGKWYCPKCRGENEKTMDKALEKSKKERAYNR
Applications	Enzyme-linked Immunoabsorbent Assay Western Blot (Recombinant protein) Antibody Production

 Tel: 1-631-559-9269 1-516-512-3133

 Email: info@creative-biomart.com  Fax: 1-631-938-8127

 45-1 Ramsey Road, Shirley, NY 11967, USA

Protein Array

Notes	Best use within three months from the date of receipt of this protein.
Storage	Store at -80 centigrade. Aliquot to avoid repeated freezing and thawing.
Storage Buffer	50 mM Tris-HCl, 10 mM reduced Glutathione, pH=8.0 in the elution buffer.

GENE INFORMATION

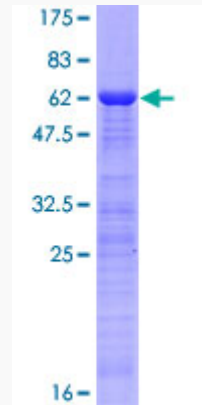
Gene Name	ING1 inhibitor of growth family, member 1 [Homo sapiens]
Official Symbol	ING1
Synonyms	ING1; inhibitor of growth family, member 1; inhibitor of growth protein 1; growth inhibitor ING1; growth inhibitory protein ING1; inhibitor of growth 1; p24ING1c; p33; p33ING1; p33ING1b; p47; p47ING1a; tumor suppressor ING1;
Gene ID	3621
mRNA Refseq	NM_005537
Protein Refseq	NP_005528
MIM	601566
UniProt ID	Q9UK53

 Tel: 1-631-559-9269 1-516-512-3133

 Email: info@creative-biomart.com  Fax: 1-631-938-8127

 45-1 Ramsey Road, Shirley, NY 11967, USA

**Quality Control
Testing**



12.5% SDS-PAGE Stained with Coomassie Blue

 Tel: 1-631-559-9269 1-516-512-3133

 Email: info@creative-biomart.com  Fax: 1-631-938-8127

 45-1 Ramsey Road, Shirley, NY 11967, USA