

Recombinant Human ING1 Protein, Myc/DDK-tagged, C13 and N15-labeled

Cat. No. ING1-6483H **Lot. No.** (See product label)

SPECIFICATION

Product Overview	ING1 MS Standard C13 and N15-labeled recombinant protein (NP_937862) with a C-terminal MYC/DDK tag, was expressed in HEK293 cells.
Species	Human
Source	HEK293
Description	<p>This gene encodes a tumor suppressor protein that can induce cell growth arrest and apoptosis. The encoded protein is a nuclear protein that physically interacts with the tumor suppressor protein TP53 and is a component of the p53 signaling pathway. Reduced expression and rearrangement of this gene have been detected in various cancers. Multiple alternatively spliced transcript variants encoding distinct isoforms have been reported.</p>
Molecular Mass	31.9 kDa
AA Sequence	<p>MLSPANGEQLHLVNYVEDYLDIESLPPFDLQRNVSLMREIDAKYQEILKELDECYERF SRETDGAQKRRMLHCVQRALIRSQELGDEKIQIVSQMVELVENRTRQVDSHVELFE AQQELGDTAGNSGKAGADRPKGAAAQADKPNKRSRQRNNENRENASSNHDH DDGASGTPKEKAKTSKKKKRSKAKAEREASPADLPIDPNEPTYCLCNQVSYGEMI GCDNDECPIEWFHFSCVGLNHKPKGKWYCPKCRGENEKTMDKALEKSKKERAYNR SGPTRTRPLEQKLISEEDLAANDILDYKDDDDKV</p>
Purity	> 80% as determined by SDS-PAGE and Coomassie blue staining

 Tel: 1-631-559-9269 1-516-512-3133

 Email: info@creative-biomart.com  Fax: 1-631-938-8127

 45-1 Ramsey Road, Shirley, NY 11967, USA

Stability	Stable for 3 months from receipt of products under proper storage and handling conditions.
Storage	Store at -80 centigrade. Avoid repeated freeze-thaw cycles.
Concentration	50 µg/mL as determined by BCA
Storage Buffer	100 mM glycine, 25 mM Tris-HCl, pH 7.3.

GENE INFORMATION

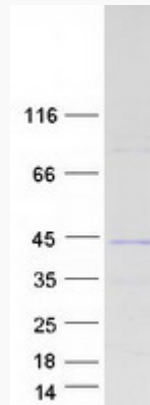
Gene Name	ING1 inhibitor of growth family member 1 [Homo sapiens (human)]
Official Symbol	ING1
Synonyms	ING1; inhibitor of growth family, member 1; inhibitor of growth protein 1; growth inhibitor ING1; growth inhibitory protein ING1; inhibitor of growth 1; p24ING1c; p33; p33ING1; p33ING1b; p47; p47ING1a; tumor suppressor ING1;
Gene ID	3621
mRNA Refseq	NM_198219
Protein Refseq	NP_937862
MIM	601566
UniProt ID	Q9UK53

 Tel: 1-631-559-9269 1-516-512-3133

 Email: info@creative-biomart.com  Fax: 1-631-938-8127

 45-1 Ramsey Road, Shirley, NY 11967, USA

SDS-PAGE



 Tel: 1-631-559-9269 1-516-512-3133

 Email: info@creative-biomart.com  Fax: 1-631-938-8127

 45-1 Ramsey Road, Shirley, NY 11967, USA