

Recombinant Human ING1 protein, His-tagged

Cat. No. ING1-668H Lot. No. (See product label)

SPECIFICATION

Product Overview	Recombinant Human ING1 protein(1-279 aa), fused with N-terminal His tag, was expressed in E.coli.
Species	Human
Source	E.coli
ProteinLength	1-279 aa
Form	The purified protein was lyophilized from sterile phosphate-buffered saline (PBS: 58 mM Na ₂ HPO ₄ , 17 mM NaH ₂ PO ₄ , 68 mM NaCl, pH 7.4). Prior to lyophilization, 5% (w/v) trehalose and 5% (w/v) mannitol were incorporated as cryoprotective excipients. The protein was eluted with a buffer containing 300 mM imidazole.
AASequence	MLSPANGEQLHLVNYVEDYLDIESLPFDLQRNVSLMREIDAKYQEILKELDECYERF SRETDGAQKRRMLHCVQRALIRSQELGDEKIQIVSQMVENVENRTRQVDSHVELFE AQQELGDTAGNSGKAGADRPKGEAAAQADKPNKRSRRQRNNENRENASSNHDH DDGASGTPKEKKAKTSKKKKRSKAKAEREASPADLPIDPNEPTYCLCNQVSYGEMI GCDNDECPIEWFHFSCVGLNHKPKGKWYCPKCRGENEKTMDKALEKSKKERAYNR
Purity	85%, by SDS-PAGE with Coomassie Brilliant Blue staining.
Storage	Store at 2-8°C for 1-2 weeks. Aliquot and store at -20°C to -80°C for up to 3 months, reconstitution with sterile water and addition of an equal volume of glycerol. Avoid repeat freeze-thaw cycles.

 Tel: 1-631-559-9269 1-516-512-3133

 Email: info@creative-biomart.com  Fax: 1-631-938-8127

 45-1 Ramsey Road, Shirley, NY 11967, USA

Reconstitution

Dissolve the product in 200 µl sterile water to achieve a working concentration of 0.25 g/µl. If experimental compatibility allows, mix the aqueous solution with an equal volume of glycerol (1:1 ratio) after initial reconstitution.

GENE INFORMATION**Gene Name**

ING1 inhibitor of growth family, member 1 [Homo sapiens]

Official Symbol

ING1

Synonyms

ING1; inhibitor of growth family, member 1; inhibitor of growth protein 1; growth inhibitor ING1; growth inhibitory protein ING1; inhibitor of growth 1; p24ING1c; p33; p33ING1; p33ING1b; p47; p47ING1a; tumor suppressor ING1;

Gene ID

3621

mRNA Refseq

NM_005537

Protein Refseq

NP_005528

MIM

601566

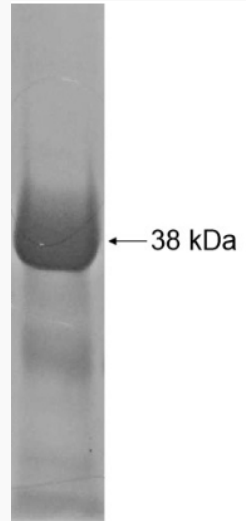
UniProt ID

Q9UK53

 Tel: 1-631-559-9269 1-516-512-3133 Email: info@creative-biomart.com  Fax: 1-631-938-8127 45-1 Ramsey Road, Shirley, NY 11967, USA



SDS-PAGE



☎ Tel: 1-631-559-9269 1-516-512-3133

☎ Email: info@creative-biomart.com ☎ Fax: 1-631-938-8127

☎ 45-1 Ramsey Road, Shirley, NY 11967, USA