

Recombinant Human ING5 Protein, GST-tagged

Cat. No. ING5-5124H Lot. No. (See product label)

SPECIFICATION

Product Overview	Human ING5 full-length ORF (NP_115705.2, 1 a.a. - 240 a.a.) recombinant protein with GST-tag at N-terminal.
Species	Human
Source	Wheat Germ
Description	The protein encoded by this gene is similar to ING1, a tumor suppressor protein that can interact with TP53, inhibit cell growth, and induce apoptosis. This protein contains a PHD-finger, which is a common motif in proteins involved in chromatin remodeling. This protein can bind TP53 and EP300/p300, a component of the histone acetyl transferase complex, suggesting its involvement in TP53-dependent regulatory pathway. [provided by RefSeq]
Molecular Mass	54.2 kDa
AA Sequence	MATAMYLEHYLDSIENLPCELQRNFQLMRELDQRTEDKKAIEDILAAEYISTVKTLSP DQRVERLQKIQNAYSKCKEYSDDKVQLAMQTYEMVDKHIRRLDADLARFEADLKDK MEGSDFFESSGGRGLKKGRGQKEKRGSRGRGRRTSEEDTPKKKKHKGGSEFTDTIL SVHPSDVLDMVPDPNEPTYCLCHQVSYGEMIGCDNPDCPIEFWFHACVDLTTKPKG KWFCPRCVQEKRKKK
Applications	Enzyme-linked Immunoabsorbent Assay Western Blot (Recombinant protein) Antibody Production

 Tel: 1-631-559-9269 1-516-512-3133

 Email: info@creative-biomart.com  Fax: 1-631-938-8127

 45-1 Ramsey Road, Shirley, NY 11967, USA

Protein Array

Notes	Best use within three months from the date of receipt of this protein.
Storage	Store at -80 centigrade. Aliquot to avoid repeated freezing and thawing.
Storage Buffer	50 mM Tris-HCl, 10 mM reduced Glutathione, pH=8.0 in the elution buffer.

GENE INFORMATION

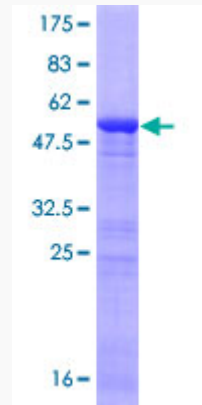
Gene Name	ING5 inhibitor of growth family, member 5 [Homo sapiens]
Official Symbol	ING5
Synonyms	ING5; inhibitor of growth family, member 5; inhibitor of growth protein 5; FLJ23842; p28ING5;
Gene ID	84289
mRNA Refseq	NM_032329
Protein Refseq	NP_115705
MIM	608525
UniProt ID	Q8WYH8

 Tel: 1-631-559-9269 1-516-512-3133

 Email: info@creative-biomart.com  Fax: 1-631-938-8127

 45-1 Ramsey Road, Shirley, NY 11967, USA

**Quality Control
Testing**



12.5% SDS-PAGE Stained with Coomassie Blue

 Tel: 1-631-559-9269 1-516-512-3133

 Email: info@creative-biomart.com  Fax: 1-631-938-8127

 45-1 Ramsey Road, Shirley, NY 11967, USA