

Recombinant Human INHA Protein, His-tagged

Cat. No. INHA-579H Lot. No. (See product label)

SPECIFICATION

Product Overview	Recombinant Human INHA(Ala25~Cys363) fused with His tag at N-terminal was expressed in E. coli.
Species	Human
Source	E.coli
ProteinLength	Ala25~Cys363
Description	This gene encodes a member of the TGF-beta (transforming growth factor-beta) superfamily of proteins. The encoded preproprotein is proteolytically processed to generate multiple peptide products, including the alpha subunit of the inhibin A and B protein complexes. These complexes negatively regulate follicle stimulating hormone secretion from the pituitary gland. Inhibins have also been implicated in regulating numerous cellular processes including cell proliferation, apoptosis, immune response and hormone secretion. Mutations in this gene may be associated with male infertility and premature ovarian failure in female human patients.
Form	PBS, pH7.4, containing 0.01% SKL, 1mM DTT, 5% Trehalose and Proclin300.
Molecular Mass	40.6kDa
Identity	Reconstitute in PBS or others
Endotoxin	<1.0EU per 1g (determined by the LAL method)

 Tel: 1-631-559-9269 1-516-512-3133

 Email: info@creative-biomart.com  Fax: 1-631-938-8127

 45-1 Ramsey Road, Shirley, NY 11967, USA

Purity	> 95%
Applications	Positive Control; Immunogen; SDS-PAGE; WB. If bio-activity of the protein is needed, please check active protein
Stability	The thermal stability is described by the loss rate. The loss rate was determined by accelerated thermal degradation test, that is, incubate the protein at 37 centigrade for 48h, and no obvious degradation and precipitation were observed. The loss rate is less than 5% within the expiration date under appropriate storage condition.
Storage	Avoid repeated freeze/thaw cycles. Store at 2-8 centigrade for one month. Aliquot and store at -80 centigrade for 12 months.
Reconstitution	Reconstitute in PBS or others

GENE INFORMATION

Gene Name	INHA inhibin, alpha [Homo sapiens]
Official Symbol	INHA
Synonyms	INHA; inhibin, alpha; inhibin alpha chain; A-inhibin subunit;
Gene ID	3623
mRNA Refseq	NM_002191
Protein Refseq	NP_002182
MIM	147380

 Tel: 1-631-559-9269 1-516-512-3133

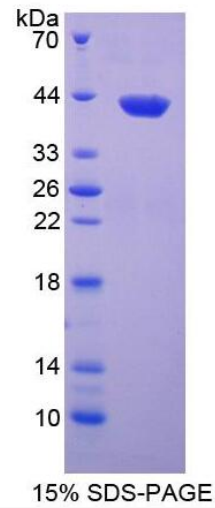
 Email: info@creative-biomart.com  Fax: 1-631-938-8127

 45-1 Ramsey Road, Shirley, NY 11967, USA



UniProt ID

P05111



Tel: 1-631-559-9269 1-516-512-3133

Email: info@creative-biomart.com Fax: 1-631-938-8127

45-1 Ramsey Road, Shirley, NY 11967, USA