

Recombinant Bovine INHA Protein (227-360 aa), His-SUMO-tagged

Cat. No. INHA-582B **Lot. No.** (See product label)

SPECIFICATION

Product Overview	Recombinant Bovine INHA Protein (227-360 aa) is produced by E. coli expression system. This protein is fused with a 6xHis-SUMO tag at the N-terminal. Protein Description: Full Length of Mature Protein.
Species	Bovine
Source	E.coli
ProteinLength	227-360 aa
Description	Inhibins and activins inhibit and activate, respectively, the secretion of follitropin by the pituitary gland. Inhibins/activins are involved in regulating a number of diverse functions such as hypothalamic and pituitary hormone secretion, gonadal hormone secretion, germ cell development and maturation, erythroid differentiation, insulin secretion, nerve cell survival, bryonic axial development or bone growth, depending on their subunit composition. Inhibins appear to oppose the functions of activins.
Form	Tris-based buffer, 50% glycerol
Molecular Mass	30.6 kDa
AA Sequence	STPPLPWPWSPAALRLLQRPPEEPAAHADCHRAALNISFQELGWDRWIVHPPSFIFY YCHGGCGLSPPQDLPLVPGVPPTPVQPLSLVPGAQPCCAALPGTMRPLHVRTTS DGGYSFKYEMVPNLLTQHCACI

 Tel: 1-631-559-9269 1-516-512-3133

 Email: info@creative-biomart.com  Fax: 1-631-938-8127

 45-1 Ramsey Road, Shirley, NY 11967, USA

Purity	> 90% as determined by SDS-PAGE.
Notes	Repeated freezing and thawing is not recommended. Store working aliquots at 4 centigrade for up to one week.
Storage	The shelf life is related to many factors, storage state, buffer ingredients, storage temperature and the stability of the protein itself. Generally, the shelf life of liquid form is 6 months at -20 centigrade/-80 centigrade. The shelf life of lyophilized form is 12 months at -20 centigrade/-80 centigrade.
Concentration	A hardcopy of COA with concentration instruction is sent along with the products.

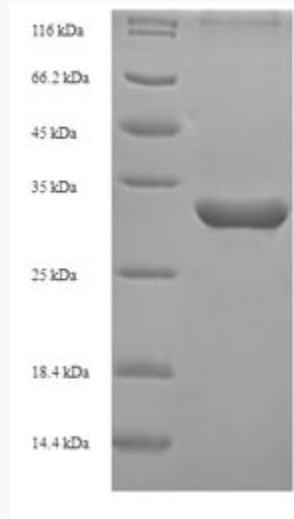
GENE INFORMATION

Gene Name	INHA inhibin subunit alpha [Bos taurus (cattle)]
Official Symbol	INHA
Gene ID	281254
mRNA Refseq	NM_174094
Protein Refseq	NP_776519
UniProt ID	P07994

 Tel: 1-631-559-9269 1-516-512-3133

 Email: info@creative-biomart.com  Fax: 1-631-938-8127

 45-1 Ramsey Road, Shirley, NY 11967, USA



(Tris-Glycine gel) Discontinuous SDS-PAGE (reduced) with 5% enrichment gel and 15% separation gel.

 Tel: 1-631-559-9269 1-516-512-3133

 Email: info@creative-biomart.com  Fax: 1-631-938-8127

 45-1 Ramsey Road, Shirley, NY 11967, USA