

## Active Recombinant Human/Mouse/Rat INHBA Protein (Gly311-Ser426), GMP Grade

Cat. No. INHBA-09HG Lot. No. (See product label)

### SPECIFICATION

<b>Product Overview</b>	GMP recombinant human/Mouse/Rat Activin A protein (Gly311-Ser426) without tag was expressed in Chinese Hamster Ovary cell line and manufactured and tested under cGMP guidelines.
<b>Species</b>	Human/Mouse/Rat
<b>Source</b>	CHO
<b>ProteinLength</b>	Gly311-Ser426
<b>Description</b>	This gene encodes a member of the TGF-beta (transforming growth factor-beta) superfamily of proteins. The encoded preproprotein is proteolytically processed to generate a subunit of the dimeric activin and inhibin protein complexes. These complexes activate and inhibit, respectively, follicle stimulating hormone secretion from the pituitary gland. The encoded protein also plays a role in eye, tooth and testis development. Elevated expression of this gene may be associated with cancer cachexia in human patients.
<b>Form</b>	Disulfide-linked homodimer
<b>Bio-activity</b>	Measured by its ability to induce hemoglobin expression in K562 human chronic myelogenous leukemia cells. The ED50 for this effect is 0.2-1.2 ng/mL. The specific activity of Recombinant Human/Mouse/Rat Activin A is >1000 units/mg, which is calibrated against the human Activin A WHO reference standard.

 Tel: 1-631-559-9269 1-516-512-3133

 Email: [info@creative-biomart.com](mailto:info@creative-biomart.com)  Fax: 1-631-938-8127

 45-1 Ramsey Road, Shirley, NY 11967, USA

<b>Molecular Mass</b>	Predicted Molecular Mass: 13 kDa (monomer) SDS-PAGE: 14 kDa, reducing conditions; 24 kDa, non-reducing conditions
<b>N-terminal Sequence Analysis</b>	Gly311-Leu-Glu-(Cys)-Asp-Gly-Lys-Val-Asn-Ile
<b>Endotoxin</b>	<0.10 EU/ µg of the protein by the LAL method.
<b>Purity</b>	>97%, by SDS-PAGE with silver staining.
<b>Storage</b>	Use a manual defrost freezer and avoid repeated freeze-thaw cycles. A minimum of 12 months when stored at ≤ -20 centigrade as supplied. Refer to lot specific COA for the Use by Date. 1 month, 2 to 8 centigrade under sterile conditions after reconstitution. 3 months, ≤ -20 centigrade under sterile conditions after reconstitution.
<b>Storage Buffer</b>	Lyophilized from a 0.2 µm filtered solution in Acetonitrile and TFA.
<b>Reconstitution</b>	Reconstitute at 100-500 µg/mL in sterile 4 mM HCl.
<b>Shipping</b>	The product is shipped with polar packs.

## GENE INFORMATION

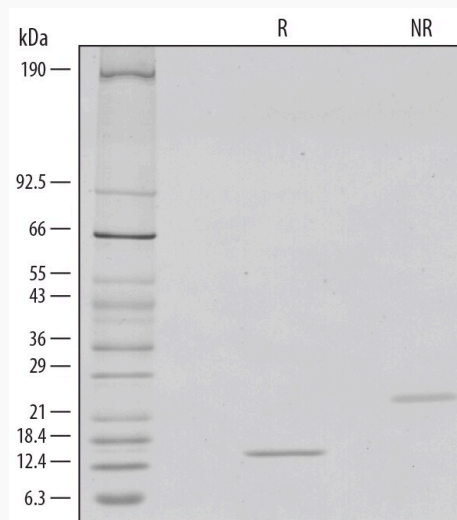
<b>Gene Name</b>	INHBA inhibin, beta A [ Homo sapiens ]
<b>Official Symbol</b>	INHBA
<b>Synonyms</b>	INHBA; inhibin, beta A; inhibin, beta A (activin A, activin AB alpha polypeptide); inhibin beta A chain; Inhibin, beta-1; activin beta-A chain; FSH-releasing protein; erythroid differentiation factor; erythroid differentiation protein; follicle-stimulating

 Tel: 1-631-559-9269 1-516-512-3133

 Email: [info@creative-biomart.com](mailto:info@creative-biomart.com)  Fax: 1-631-938-8127

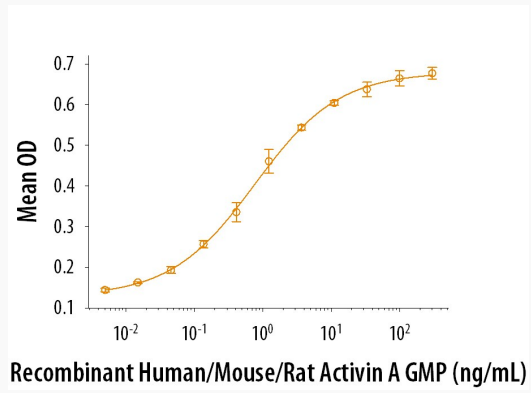
 45-1 Ramsey Road, Shirley, NY 11967, USA

hormone-releasing protein; EDF; FRP;

**Gene ID** 3624**mRNA Refseq** NM\_002192**Protein Refseq** NP\_002183**MIM** 147290**UniProt ID** P08476**SDS-PAGE** Tel: 1-631-559-9269 1-516-512-3133 Email: [info@creative-biomart.com](mailto:info@creative-biomart.com)  Fax: 1-631-938-8127 45-1 Ramsey Road, Shirley, NY 11967, USA



**Bioactivity**



Tel: 1-631-559-9269 1-516-512-3133

Email: [info@creative-biomart.com](mailto:info@creative-biomart.com) Fax: 1-631-938-8127

45-1 Ramsey Road, Shirley, NY 11967, USA