

Recombinant Human INHBA Protein

Cat. No. INHBA-172H Lot. No. (See product label)

SPECIFICATION

Product Overview	Recombinant Human Activin A is produced by our Mammalian expression system and the target gene encoding Gly311-Ser426 is expressed.
Species	Human
Source	Human Cells
ProteinLength	Gly311-Ser426
Description	<p>Activin and inhibin are two closely related protein complexes that have almost directly opposite biological effects. Activins, members of the TGF-beta superfamily, are disulfide-linked dimeric proteins originally purified from gonadal fluids as proteins that stimulated pituitary follicle stimulating hormone (FSH) release. Inhibins/activins are involved in regulating a number of diverse functions such as hypothalamic and pituitary hormone secretion, gonadal hormone secretion, germ cell development and maturation, erythroid differentiation, insulin secretion, nerve cell survival, embryonic axial development or bone growth, depending on their subunit composition. Activins are homodimers or heterodimers of the various beta subunit isoforms, while inhibins are heterodimers of a unique alpha subunit and one of the various beta subunits.</p>
Form	Lyophilized from a 0.2 um filtered solution of PBS, pH 7.4.
AA Sequence	<p>GLECDGKVNICCKKQFFVSFKDIGWNDWIIAPSGYHANYCEGECPSHIAGTSGSSLS FHSTVINHYRMRGHS PFANLKSCCVPT KLRPMSMLYYDDGQNIKKDIQNMIVEEC GCS</p>

 Tel: 1-631-559-9269 1-516-512-3133

 Email: info@creative-biomart.com  Fax: 1-631-938-8127

 45-1 Ramsey Road, Shirley, NY 11967, USA

Endotoxin	Less than 0.1 ng/ug (1 EU/ug).
Purity	>95%
Storage	<p>Lyophilized protein should be stored at < -20 centigrade, though stable at room temperature for 3 weeks.</p> <p>Reconstituted protein solution can be stored at 4-7 centigrade for 2-7 days.</p> <p>Aliquots of reconstituted samples are stable at < -20 centigrade for 3 months.</p>
Reconstitution	<p>Always centrifuge tubes before opening. Do not mix by vortex or pipetting.</p> <p>It is not recommended to reconstitute to a concentration less than 100µg/ml.</p> <p>Dissolve the lyophilized protein in distilled water.</p> <p>Please aliquot the reconstituted solution to minimize freeze-thaw cycles.</p>
Quality Statement	Purity: Greater than 95% as determined by reducing SDS-PAGE.
Shipping	<p>The product is shipped at ambient temperature.</p> <p>Upon receipt, store it immediately at the temperature listed below.</p>

GENE INFORMATION

Gene Name	INHBA inhibin subunit beta A [Homo sapiens (human)]
Official Symbol	INHBA
Synonyms	Inhibin beta A chain; Activin A; EDF; FRP
Gene ID	3624
mRNA Refseq	NM_002192.4

 Tel: 1-631-559-9269 1-516-512-3133

 Email: info@creative-biomart.com  Fax: 1-631-938-8127

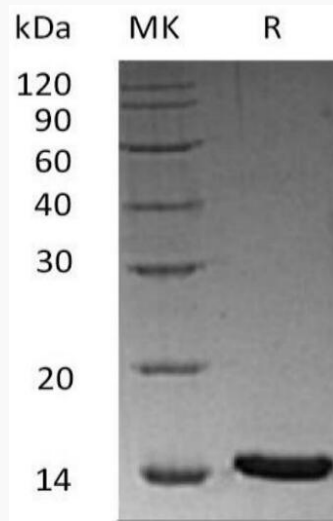
 45-1 Ramsey Road, Shirley, NY 11967, USA

Protein Refseq NP_002183.1

MIM 147290

UniProt ID P08476

SDS-PAGE



 Tel: 1-631-559-9269 1-516-512-3133

 Email: info@creative-biomart.com  Fax: 1-631-938-8127

 45-1 Ramsey Road, Shirley, NY 11967, USA