

## Recombinant Active Human INHBA Protein, His-tagged(C-ter)

Cat. No. INHBA-220H Lot. No. (See product label)

### SPECIFICATION

|                         |  |
|-------------------------|--|
| <b>Product Overview</b> | Recombinant Active Human INHBA Protein with His tag (C-ter) was expressed in E. coli.  |
| <b>Species</b>          | Human  |
| <b>Source</b>           | E.coli   |
| <b>Description</b>      | <p>The inhibin beta A subunit joins the alpha subunit to form a pituitary FSH secretion inhibitor. Inhibin has been shown to regulate gonadal stromal cell proliferation negatively and to have tumor-suppressor activity. In addition, serum levels of inhibin have been shown to reflect the size of granulosa-cell tumors and can therefore be used as a marker for primary as well as recurrent disease. Because expression in gonadal and various extragonadal tissues may vary severalfold in a tissue-specific fashion, it is proposed that inhibin may be both a growth/differentiation factor and a hormone. Furthermore, the beta A subunit forms a homodimer, activin A, and also joins with a beta B subunit to form a heterodimer, activin AB, both of which stimulate FSH secretion. Finally, it has been shown that the beta A subunit mRNA is identical to the erythroid differentiation factor subunit mRNA and that only one gene for this mRNA exists in the human genome. [provided by RefSeq, Jul 2008]</p> |
| <b>Form</b>             | Powder   |
| <b>Bio-activity</b>     | Determined by its ability to induce hemoglobin expression in K562 cells. The ED50 for this effect is < 0.85 ng/mL. The specific activity of recombinant human IGF-I is   |

 Tel: 1-631-559-9269 1-516-512-3133

 Email: [info@creative-biomart.com](mailto:info@creative-biomart.com)  Fax: 1-631-938-8127

 45-1 Ramsey Road, Shirley, NY 11967, USA

|                       |   |
|-----------------------|---|
|                       | approximately > 1.4 x 10 <sup>3</sup> IU/mg.  |
| <b>AA Sequence</b>    | MGLECDGKVNICCKKQFFVSFKDIGWNDWIIAPSGYHANYCEGECPSHIAGTSGSSL<br>SFHSTVINHYRMRGHSPFANLKSCCVPTKLRPMSMLYDDGQNIKKDIQNMIVEEC<br>GCS   |
| <b>Endotoxin</b>      | Endotoxin level is less than 0.1 EU/μg of the protein, as determined by the LAL test.   |
| <b>Purity</b>         | > 95% (by SDS-PAGE)   |
| <b>Applications</b>   | SDS-PAGE  |
| <b>Notes</b>          | For laboratory research only, not for drug, diagnostic or other use.  |
| <b>Storage</b>        | Lyophilized protein should be stored at -20°C. After reconstitution, aliquot and store at -20°C or -80°C for up to one month. Storage in frost free freezers is not recommended. Avoid repeated freeze/thaw cycles. Suggest spin the vial prior to opening. |
| <b>Storage Buffer</b> | PBS (pH 8.0) and 0.1% Sarkosyl.   |
| <b>Reconstitution</b> | It is recommended to reconstitute the lyophilized protein in sterile water to a concentration not less than 100 μg/mL and incubate the stock solution for at least 20 min at room temperature to make sure the protein is dissolved completely.             |

## GENE INFORMATION

|                        |  |
|------------------------|--|
| <b>Gene Name</b>       | INHBA inhibin, beta A [ Homo sapiens ] |
| <b>Official Symbol</b> | INHBA                                  |

 Tel: 1-631-559-9269 1-516-512-3133

 Email: [info@creative-biomart.com](mailto:info@creative-biomart.com)  Fax: 1-631-938-8127

 45-1 Ramsey Road, Shirley, NY 11967, USA

**Synonyms**

INHBA; inhibin, beta A; inhibin, beta A (activin A, activin AB alpha polypeptide); inhibin beta A chain; Inhibin, beta-1; activin beta-A chain; FSH-releasing protein; erythroid differentiation factor; erythroid differentiation protein; follicle-stimulating hormone-releasing protein; EDF; FRP;

**Gene ID**

3624

**mRNA Refseq**

NM\_002192

**Protein Refseq**

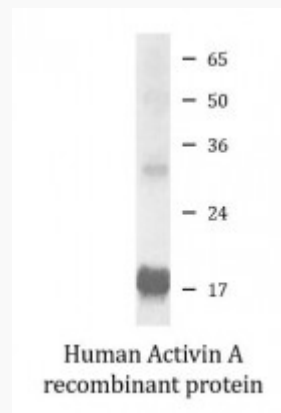
NP\_002183

**MIM**

147290

**UniProt ID**

P08476

**SDS-PAGE**


 Tel: 1-631-559-9269 1-516-512-3133

 Email: [info@creative-biomart.com](mailto:info@creative-biomart.com)  Fax: 1-631-938-8127

 45-1 Ramsey Road, Shirley, NY 11967, USA