

Recombinant Human/Mouse/Rat INHBA Protein

Cat. No. INHBA-23H Lot. No. (See product label)

SPECIFICATION

Product Overview

Recombinant human/mouse/rat Activin A PLUS protein without tag was expressed in E. coli.

Animal-free (AOF) and carrier protein-free.

Mass spectrometry: single species with expected mass.

Analytical reversed-phase: single sharp peak.

Recovery from stock vial: >95%

Species Human

Source E.coli

Description

This gene encodes a member of the TGF-beta (transforming growth factor-beta) superfamily of proteins. The encoded preproprotein is proteolytically processed to generate a subunit of the dimeric activin and inhibin protein complexes. These complexes activate and inhibit, respectively, follicle stimulating hormone secretion from the pituitary gland. The encoded protein also plays a role in eye, tooth and testis development. Elevated expression of this gene may be associated with cancer cachexia in human patients.

Molecular Mass 24 kDa (dimer)

Endotoxin <0.005 EU/μg protein (below level of detection)

Applications Maintenance of pluripotency in human iPSC

 Tel: 1-631-559-9269 1-516-512-3133

 Email: info@creative-biomart.com  Fax: 1-631-938-8127

 45-1 Ramsey Road, Shirley, NY 11967, USA

Storage Resuspend in 10mM HCl at >100 µg/mL, prepare single use aliquots, add carrier protein if desired and store frozen at -20 or -80 centigrade

Storage Buffer Lyophilized from acetonitrile, TFA

GENE INFORMATION

Gene Name [INHBA inhibin subunit beta A \[Homo sapiens \(human\) \]](#)

Official Symbol [INHBA](#)

Synonyms INHBA; inhibin subunit beta A; EDF; FRP; inhibin beta A chain; FSH-releasing protein; Inhibin, beta-1; activin beta-A chain; erythroid differentiation factor; erythroid differentiation protein; follicle-stimulating hormone-releasing protein; inhibin beta A subunit; inhibin, beta A (activin A, activin AB alpha polypeptide)

Gene ID [3624](#)

mRNA Refseq [NM_002192](#)

Protein Refseq [NP_002183](#)

MIM [147290](#)

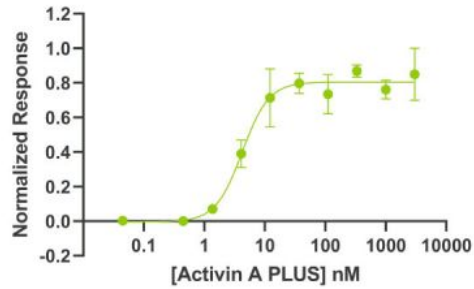
UniProt ID [P08476](#)

 Tel: 1-631-559-9269 1-516-512-3133

 Email: info@creative-biomart.com  Fax: 1-631-938-8127

 45-1 Ramsey Road, Shirley, NY 11967, USA

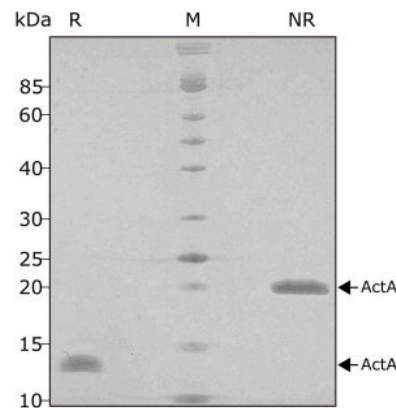
Bioactivity



Activin A PLUS activity is determined using an activin-responsive firefly luciferase reporter in HEK293T cells. in triplicate with a serial dilution of activin A for 6 hours.

Firefly luciferase activity is measured and normalized to the control Renilla luciferase activity. EC50 = 0.103 ng/mL (4.24 pM). EC50 is within the expected range of 6 ± 2 pM.

Purity




Tel: 1-631-559-9269 1-516-512-3133

Email: info@creative-biomart.com Fax: 1-631-938-8127

45-1 Ramsey Road, Shirley, NY 11967, USA



Activin A PLUS migrates as a single band at 24 kDa in non-reducing and 13 kDa as a single monomeric species upon reduction (R). No contaminating protein bands are visible. Purified recombinant protein was resolved using 15% w/v SDS-PAGE in reduced and non-reduced conditions and stained with Coomassie Brilliant Blue R250.

 Tel: 1-631-559-9269 1-516-512-3133

 Email: info@creative-biomart.com  Fax: 1-631-938-8127

 45-1 Ramsey Road, Shirley, NY 11967, USA