

Active Recombinant Human INHBA Protein, Pre-aliquoted

Cat. No. INHBA-25H Lot. No. (See product label)

SPECIFICATION

Product Overview Recombinant Human INHBA Protein, Gly311-Ser426, was expressed in CHO.

Species Human

Source CHO

ProteinLength Gly311-Ser426

Description This gene encodes a member of the TGF-beta (transforming growth factor-beta) superfamily of proteins. The encoded preproprotein is proteolytically processed to generate a subunit of the dimeric activin and inhibin protein complexes. These complexes activate and inhibit, respectively, follicle stimulating hormone secretion from the pituitary gland. The encoded protein also plays a role in eye, tooth and testis development. Elevated expression of this gene may be associated with cancer cachexia in human patients.

Bio-activity Measured by its ability to induce hemoglobin expression in K562 human chronic myelogenous leukemia cells. The ED50 for this effect is 0.2-1.2 ng/mL.

Molecular Mass Predicted Molecular Mass:13 kDa (monomer)
SDS-PAGE: 14 kDa, reducing conditions, 24 kDa, non-reducing conditions

N-terminal Sequence Analysis Gly311

 Tel: 1-631-559-9269 1-516-512-3133

 Email: info@creative-biomart.com  Fax: 1-631-938-8127

 45-1 Ramsey Road, Shirley, NY 11967, USA

Endotoxin	< 0.01 EU/μg of the protein by the LAL method.
Purity	> 95% by SDS-PAGE under reducing conditions and visualized by silver stain.
Stability	<p>Use a manual defrost freezer and avoid repeated freeze-thaw cycles.</p> <ul style="list-style-type: none"> • 6 months from date of receipt at room temperature as supplied. • 12 months from date of receipt at 2-8 centigrade as supplied. • 1 month at 2-8 centigrade under sterile conditions after reconstitution. • 3 months at -20 to -80 centigrade under sterile conditions after reconstitution.
Reconstitution	For a stock solution, reconstitute at 100 μg/mL in 4 mM HCl, or simply roll Pre-aliquoted directly into cell culture medium for immediate use.
Shipping	The product is shipped at ambient temperature.

GENE INFORMATION

Gene Name	INHBA inhibin subunit beta A [Homo sapiens (human)]
Official Symbol	INHBA
Synonyms	INHBA; inhibin subunit beta A; EDF; FRP; inhibin beta A chain; FSH-releasing protein; Inhibin, beta-1; activin beta-A chain; erythroid differentiation factor; erythroid differentiation protein; follicle-stimulating hormone-releasing protein; inhibin beta A subunit; inhibin, beta A (activin A, activin AB alpha polypeptide)
Gene ID	3624
mRNA Refseq	NM_002192
Protein Refseq	NP_002183

 Tel: 1-631-559-9269 1-516-512-3133

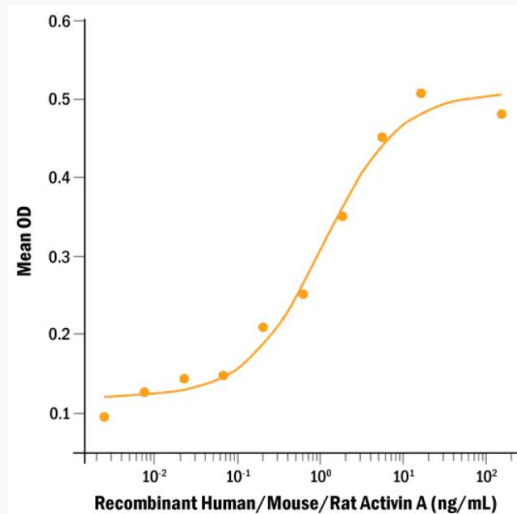
 Email: info@creative-biomart.com  Fax: 1-631-938-8127

 45-1 Ramsey Road, Shirley, NY 11967, USA

MIM 147290

UniProt ID P08476

Bio-activity



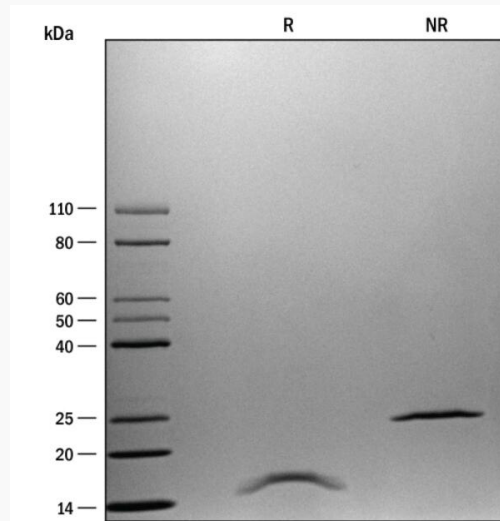
Recombinant Human/Mouse/Rat Activin A induces hemoglobin expression in K562 chronic myelogenous leukemia cells. The ED50 is 0.2-1.2 ng/mL.

Tel: 1-631-559-9269 1-516-512-3133

Email: info@creative-biomart.com Fax: 1-631-938-8127

45-1 Ramsey Road, Shirley, NY 11967, USA

SDS-PAGE



1 μ g/lane of Recombinant Human/Mouse/Rat Activin A was resolved with SDS-PAGE under reducing (R) and non-reducing (NR) conditions and visualized with silver staining, showing single bands at 14 kDa and 24 kDa, respectively.

Tel: 1-631-559-9269 1-516-512-3133

Email: info@creative-biomart.com Fax: 1-631-938-8127

45-1 Ramsey Road, Shirley, NY 11967, USA