

Recombinant Human Inhibin A, His-tagged

Cat. No. INHBA-276H Lot. No. (See product label)

SPECIFICATION

Product Overview	Recombinant Human Inhibin A is a 264 amino acid, single chain protein, comprising the mature inhibin α and the mature β A chain (α - β A). The protein is expressed in E. coli with an amino-terminal hexahistidine tag.
Species	Human
Source	E.coli
Description	<p>Inhibins are dimeric peptide hormones produced by female ovarian granulosa cells and male Sertoli cells as well as a variety of other tissues. Inhibins have two isoforms, A and B, with the same alpha subunit but different beta subunits. Inhibin A is a dimer of alpha and beta A subunits, inhibin B is a dimer of alpha and beta B subunits.</p> <p>Inhibins are thought to inhibit the production of follicle-stimulating hormone (FSH) by the pituitary gland. In addition, Inhibins are also thought to play a role in the control of gametogenesis, and embryonic and foetal development.</p>
Purity	>95% by SDS-PAGE
Applications	ELISA, Western Blot
Storage	Store at 4°C if entire vial will be used within 2-4 weeks. Store, frozen at -20°C for longer periods of time. Please avoid freeze thaw cycles.

GENE INFORMATION

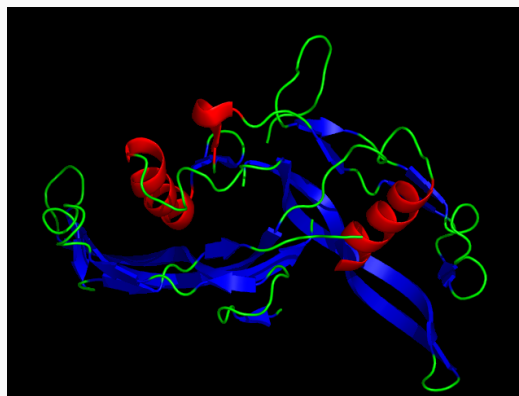
 Tel: 1-631-559-9269 1-516-512-3133

 Email: info@creative-biomart.com  Fax: 1-631-938-8127

 45-1 Ramsey Road, Shirley, NY 11967, USA

Gene Name	INHBA inhibin, beta A [Homo sapiens]
Synonyms	A-inhibin subunit; inhibin alpha subunit; inhibin, alpha; INHA; Inhibin A; Inhibin isoform A.
Gene ID	3624
mRNA Refseq	NM_002192
Protein Refseq	NP_002183
MIM	147290
UniProt ID	P08476
Chromosome Location	7p15-p13
Function	cytokine activity; follistatin binding; growth factor activity; hormone activity; identical protein binding; signal transducer activity

The Activin dimer,
from
2ARV.pdbinhibin,
beta A



 Tel: 1-631-559-9269 1-516-512-3133

 Email: info@creative-biomart.com  Fax: 1-631-938-8127

 45-1 Ramsey Road, Shirley, NY 11967, USA