

# Recombinant Human INHBA Protein, Myc/DDK-tagged, C13 and N15-labeled

Cat. No. INHBA-5623H Lot. No. (See product label)

## SPECIFICATION

<b>Product Overview</b>	INHBA MS Standard C13 and N15-labeled recombinant protein (NP_002183) with a C-terminal MYC/DDK tag, was expressed in HEK293 cells.
<b>Species</b>	Human
<b>Source</b>	HEK293
<b>Description</b>	This gene encodes a member of the TGF-beta (transforming growth factor-beta) superfamily of proteins. The encoded preproprotein is proteolytically processed to generate a subunit of the dimeric activin and inhibin protein complexes. These complexes activate and inhibit, respectively, follicle stimulating hormone secretion from the pituitary gland. The encoded protein also plays a role in eye, tooth and testis development. Elevated expression of this gene may be associated with cancer cachexia in human patients.
<b>Molecular Mass</b>	47.4 kDa
<b>AA Sequence</b>	<p>MPLLWLRGFLLASCWIIVRSSPTPGSEGHSAAAPDCPSCALAALPKDVPNSQPPEMVE            AVKKHILNMLHLKKRPDVTQVPKAAALLNAIRKLHVGVGENGYVEIEDDIGRRAEM            NELMEQTSEIITFAESGTARKTLHFEISKEGSDLSVVERAEVWFLKVPKANRTRTKV            TIRLFQQQKHPQGSLDTGEEAAEVGLKGERSELLLSEKVV DARKSTWHVFPVSSSIQ            RLLDQKGSSLDVRIACEQCQESGASLVLLGKKKKKEEGEGKKKGGGEGGAGADE            EKEQSHRPFLMLQARQSEDHPHRRRRRGLECDGKVNICCKKQFFVSKDIGWNDW</p>

 Tel: 1-631-559-9269 1-516-512-3133

 Email: [info@creative-biomart.com](mailto:info@creative-biomart.com)  Fax: 1-631-938-8127

 45-1 Ramsey Road, Shirley, NY 11967, USA

IIAPSGYHANYCEGECPSHIAGTSGSSLSFHSTVINHYRMRGHSPFANLKSCCVPTKL  
 RPMSMLYYDDGQNIKKDIQNMIVEECGCSTRTRPLEQKLISEEDLAANDILDYKDDD  
 DKV

**Purity** > 80% as determined by SDS-PAGE and Coomassie blue staining

**Stability** Stable for 3 months from receipt of products under proper storage and handling conditions.

**Storage** Store at -80 centigrade. Avoid repeated freeze-thaw cycles.

**Concentration** 50 µg/mL as determined by BCA

**Storage Buffer** 100 mM glycine, 25 mM Tris-HCl, pH 7.3.

## GENE INFORMATION

**Gene Name** [INHBA inhibin subunit beta A \[ Homo sapiens \(human\) \]](#)

**Official Symbol** [INHBA](#)

**Synonyms** INHBA; inhibin, beta A; inhibin, beta A (activin A, activin AB alpha polypeptide); inhibin beta A chain; Inhibin, beta-1; activin beta-A chain; FSH-releasing protein; erythroid differentiation factor; erythroid differentiation protein; follicle-stimulating hormone-releasing protein; EDF; FRP;

**Gene ID** [3624](#)

**mRNA Refseq** [NM\\_002192](#)

**Protein Refseq** [NP\\_002183](#)

 Tel: 1-631-559-9269 1-516-512-3133

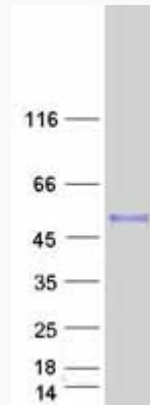
 Email: [info@creative-biomart.com](mailto:info@creative-biomart.com)  Fax: 1-631-938-8127

 45-1 Ramsey Road, Shirley, NY 11967, USA

**MIM** 147290

**UniProt ID** P08476

**SDS-PAGE**



 Tel: 1-631-559-9269 1-516-512-3133

 Email: [info@creative-biomart.com](mailto:info@creative-biomart.com)  Fax: 1-631-938-8127

 45-1 Ramsey Road, Shirley, NY 11967, USA