

## Recombinant Active Human INHBB Protein, His-tagged(C-ter)

Cat. No. INHBB-222H Lot. No. (See product label)

### SPECIFICATION

<b>Product Overview</b>	Recombinant Active Human INHBB Protein with His tag (C-ter) was expressed in E. coli.
<b>Species</b>	Human
<b>Source</b>	E.coli
<b>Description</b>	The inhibin beta B subunit joins the alpha subunit to form a pituitary FSH secretion inhibitor. Inhibin has been shown to regulate gonadal stromal cell proliferation negatively and to have tumour-suppressor activity. In addition, serum levels of inhibin have been shown to reflect the size of granulosa-cell tumors and can therefore be used as a marker for primary as well as recurrent disease. Because expression in gonadal and various extragonadal tissues may vary severalfold in a tissue-specific fashion, it is proposed that inhibin may be both a growth/differentiation factor and a hormone. Furthermore, the beta B subunit forms a homodimer, activin B, and also joins with the beta A subunit to form a heterodimer, activin AB, both of which stimulate FSH secretion. [provided by RefSeq, Jul 2008]
<b>Form</b>	Powder
<b>Bio-activity</b>	Determined by its ability to induce hemoglobin expression in K562 cells. The ED50 for this effect is < 0.7 ng/mL. The specific activity of recombinant human Activin B is > 1.5 x 10 <sup>6</sup> IU/mg.
<b>AA Sequence</b>	MGLECDGRTNLCCRQQFFIDFRLIGWNDWIIAPTGYGNYCEGSCPAYLAGVPGSA

 Tel: 1-631-559-9269 1-516-512-3133

 Email: [info@creative-biomart.com](mailto:info@creative-biomart.com)  Fax: 1-631-938-8127

 45-1 Ramsey Road, Shirley, NY 11967, USA


	SSFHTAVVNQYRMRGLNPGTVNSCCIPTKLSTMSMLYFDDEYNIVKRDVPMIVEEC GCA
<b>Endotoxin</b>	Endotoxin level is less than 0.1 EU/μg of the protein, as determined by the LAL test.
<b>Purity</b>	> 98% (by SDS-PAGE)
<b>Applications</b>	SDS-PAGE
<b>Notes</b>	For laboratory research only, not for drug, diagnostic or other use.
<b>Storage</b>	Lyophilized protein should be stored at -20°C. After reconstitution, aliquot and store at -20°C or -80°C for up to one month. Storage in frost free freezers is not recommended. Avoid repeated freeze/thaw cycles. Suggest spin the vial prior to opening.
<b>Storage Buffer</b>	PBS (pH 8.0)
<b>Reconstitution</b>	It is recommended to reconstitute the lyophilized protein in sterile water to a concentration not less than 100 μg/mL and incubate the stock solution for at least 20 min at room temperature to make sure the protein is dissolved completely.

## GENE INFORMATION

<b>Gene Name</b>	INHBB inhibin, beta B [ Homo sapiens ]
<b>Official Symbol</b>	INHBB
<b>Synonyms</b>	INHBB; inhibin, beta B; inhibin, beta B (activin AB beta polypeptide); inhibin beta B chain; Inhibin, beta-2; activin beta-B chain; activin AB beta polypeptide; MGC157939;

 Tel: 1-631-559-9269 1-516-512-3133

 Email: [info@creative-biomart.com](mailto:info@creative-biomart.com)  Fax: 1-631-938-8127

 45-1 Ramsey Road, Shirley, NY 11967, USA

**Gene ID** 3625

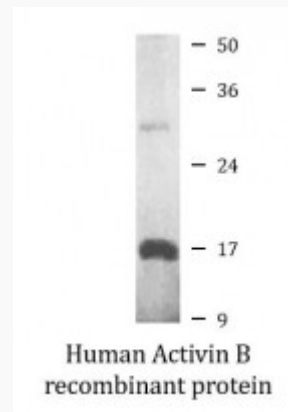
**mRNA Refseq** NM\_002193

**Protein Refseq** NP\_002184

**MIM** 147390

**UniProt ID** P09529

**SDS-PAGE**



 Tel: 1-631-559-9269 1-516-512-3133

 Email: [info@creative-biomart.com](mailto:info@creative-biomart.com)  Fax: 1-631-938-8127

 45-1 Ramsey Road, Shirley, NY 11967, USA