

Recombinant Human INHBE Protein, N-His tagged

Cat. No. INHBE-12H Lot. No. (See product label)

SPECIFICATION

Product Overview	Recombinant Human INHBE Protein with N-His tag was expressed in HEK293.
Species	Human
Source	HEK293
Description	This gene encodes a member of the TGF-beta (transforming growth factor-beta) superfamily of proteins. The encoded preproprotein is proteolytically processed to generate an inhibin beta subunit. Inhibins have been implicated in regulating numerous cellular processes including cell proliferation, apoptosis, immune response and hormone secretion. This gene may be upregulated under conditions of endoplasmic reticulum stress, and this protein may inhibit cellular proliferation and growth in pancreas and liver.
Molecular Mass	The protein has a calculated MW of 37.8 kDa.
AA Sequence	HHHHHHHHDDDDKGTGVCPCGGSKLAPQAERALVLELAKQQILDGLHLTSRPRI THPPPQAALTRALRRLQPGSVAPGNNGEEVISFATVTDSTSAYSSLLTFHLSTPRSHH LYHARLWLHVLPTLPGTLCLRIFRWGPRRRRQGSRTLLAEHHITNLGWHTLTLPSSG LRGEKSGVLKLQLDCRPLEGNSTVTGQPRRLD TAGHQQPFLKIRANEPGAGRA RRRTPTCEPATPLCCRRDHYVDFQELGWRDWILQPEGYQLNYCSGQCPPHLAGSP GIAASFHSAVFSLLKANNPWPASTSCCVPTARRPLSLLYLDHNGNVVKTDPDMVV EACGCS
Purity	> 90% by SDS-PAGE

 Tel: 1-631-559-9269 1-516-512-3133

 Email: info@creative-biomart.com  Fax: 1-631-938-8127

 45-1 Ramsey Road, Shirley, NY 11967, USA

Storage	Store it under sterile conditions at -20 to -80 centigrade. It is recommended that the protein be aliquoted for optimal storage. Avoid repeated freeze-thaw cycles.
Concentration	0.14 mg/mL by BCA
Storage Buffer	PBS, pH 7.4, 10% Glycerol, 1% SKL

GENE INFORMATION

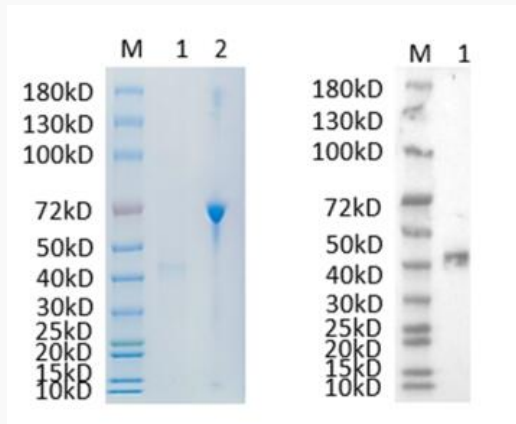
Gene Name	INHBE inhibin, beta E [Homo sapiens (human)]
Official Symbol	INHBE
Synonyms	INHBE; inhibin, beta E; inhibin beta E chain; activin; MGC4638; activin beta E; activin beta-E chain;
Gene ID	83729
mRNA Refseq	NM_031479
Protein Refseq	NP_113667
MIM	612031
UniProt ID	P58166

 Tel: 1-631-559-9269 1-516-512-3133

 Email: info@creative-biomart.com  Fax: 1-631-938-8127

 45-1 Ramsey Road, Shirley, NY 11967, USA

**Reducing 12% SDS-
PAGE and WB
analysis profiles of
purified INHBE**



1. INHBE
2. BSA

 Tel: 1-631-559-9269 1-516-512-3133

 Email: info@creative-biomart.com  Fax: 1-631-938-8127

 45-1 Ramsey Road, Shirley, NY 11967, USA