

## Recombinant Human INHBE protein, His-tagged

Cat. No. INHBE-5523H Lot. No. (See product label)

### SPECIFICATION

<b>Product Overview</b>	Recombinant Human INHBE protein(P58166)(237-350aa), fused with C-terminal His tag, was expressed in E.coli.
<b>Species</b>	Human
<b>Source</b>	E.coli
<b>ProteinLength</b>	237-350a.a.
<b>Tag</b>	His
<b>Form</b>	If the delivery form is liquid, the default storage buffer is Tris/PBS-based buffer, 5%-50% glycerol. If the delivery form is lyophilized powder, the buffer before lyophilization is Tris/PBS-based buffer, 6% Trehalose, pH 8.0.
<b>Molecular Mass</b>	19.4 kDa
<b>Purity</b>	Greater than 90% as determined by SDS-PAGE.
<b>Storage</b>	Store at -20°C/-80°C upon receipt, aliquoting is necessary for mutiple use. Avoid repeated freeze-thaw cycles.
<b>Reconstitution</b>	We recommend that this vial be briefly centrifuged prior to opening to bring the contents to the bottom. Please reconstitute protein in deionized sterile water to a concentration of 0.1-1.0 mg/mL.We recommend to add 5-50% of glycerol (final

 Tel: 1-631-559-9269 1-516-512-3133

 Email: [info@creative-biomart.com](mailto:info@creative-biomart.com)  Fax: 1-631-938-8127

 45-1 Ramsey Road, Shirley, NY 11967, USA

concentration) and aliquot for long-term storage at -20°C/-80°C.

**AA Sequence**

TPTCEPATPLCCRRDHVDFQELGWRDWILQPEGYQLNYCSGQCPPHLAGSPGIA  
 ASFHSAVFSLLKANNPWPASTSCCVPTARRPLSLLYLDHNGNVVKTDVPMVVEAC  
 GCS

## GENE INFORMATION

**Gene Name**

INHBE inhibin, beta E [ Homo sapiens ]

**Official Symbol**

INHBE

**Synonyms**

INHBE; inhibin, beta E; inhibin beta E chain; activin; MGC4638; activin beta E; activin beta-E chain;

**Gene ID**

83729

**mRNA Refseq**

NM\_031479

**Protein Refseq**

NP\_113667

**MIM**

612031

**UniProt ID**

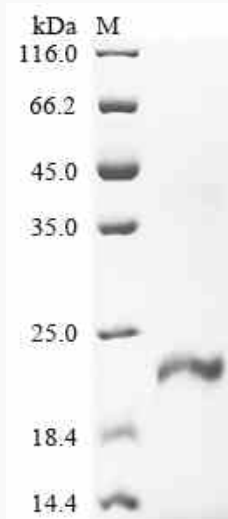
P58166

 Tel: 1-631-559-9269 1-516-512-3133

 Email: [info@creative-biomart.com](mailto:info@creative-biomart.com)  Fax: 1-631-938-8127

 45-1 Ramsey Road, Shirley, NY 11967, USA

**SDS-PAGE**



 Tel: 1-631-559-9269 1-516-512-3133

 Email: [info@creative-biomart.com](mailto:info@creative-biomart.com)  Fax: 1-631-938-8127

 45-1 Ramsey Road, Shirley, NY 11967, USA