

## Recombinant Human INHBE protein, His-tagged

Cat. No. INHBE-797H Lot. No. (See product label)

### SPECIFICATION

<b>Product Overview</b>	Recombinant Human INHBE aa. (Thr237~Ser350) fused with N-terminal His tag was produced in E. coli cells.
<b>Species</b>	Human
<b>Source</b>	E.coli
<b>ProteinLength</b>	Thr237~Ser350
<b>Description</b>	This gene encodes a member of the TGF-beta (transforming growth factor-beta) superfamily of proteins. The encoded preproprotein is proteolytically processed to generate an inhibin beta subunit. Inhibins have been implicated in regulating numerous cellular processes including cell proliferation, apoptosis, immune response and hormone secretion. This gene may be upregulated under conditions of endoplasmic reticulum stress, and this protein may inhibit cellular proliferation and growth in pancreas and liver.
<b>Form</b>	Freeze-dried powder
<b>Molecular Mass</b>	17&18kDa as determined by SDS-PAGE reducing conditions.
<b>Endotoxin</b>	<1.0EU per 1g (determined by the LAL method)
<b>Purity</b>	> 95%

 Tel: 1-631-559-9269 1-516-512-3133

 Email: [info@creative-biomart.com](mailto:info@creative-biomart.com)  Fax: 1-631-938-8127

 45-1 Ramsey Road, Shirley, NY 11967, USA

<b>Characteristic</b>	The isoelectric point is 6.2.
<b>Applications</b>	Positive Control; Immunogen; SDS-PAGE; WB
<b>Stability</b>	The thermal stability is described by the loss rate. The loss rate was determined by accelerated thermal degradation test, that is, incubate the protein at 37°C for 48h, and no obvious degradation and precipitation were observed. The loss rate is less than 5% within the expiration date under appropriate storage condition.
<b>Storage</b>	Avoid repeated freeze/thaw cycles. Store at 2-8°C for one month. Aliquot and store at -80°C for 12 months.
<b>Concentration</b>	200µg/mL
<b>Storage buffer</b>	PBS, pH7.4, containing 1mM DTT, 5% trehalose, 0.01% sarcosyl and Proclin300.
<b>Reconstitution</b>	Reconstitute in PBS (pH7.4) to a concentration of 0.1-1.0 mg/mL. Do not vortex

## GENE INFORMATION

<b>Gene Name</b>	<a href="#">INHBE inhibin beta E subunit [ Homo sapiens (human) ]</a>
<b>Official Symbol</b>	<a href="#">INHBE</a>
<b>Synonyms</b>	INHBE; inhibin beta E subunit; inhibin beta E chain; activin beta-E chain
<b>Gene ID</b>	<a href="#">83729</a>
<b>mRNA Refseq</b>	<a href="#">NM_031479.4</a>
<b>Protein Refseq</b>	<a href="#">NP_113667.1</a>

 Tel: 1-631-559-9269 1-516-512-3133

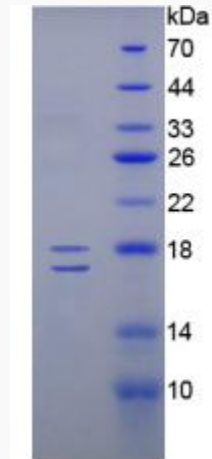
 Email: [info@creative-biomart.com](mailto:info@creative-biomart.com)  Fax: 1-631-938-8127

 45-1 Ramsey Road, Shirley, NY 11967, USA

UniProt ID

P58166

SDS-PAGE



 Tel: 1-631-559-9269 1-516-512-3133

 Email: [info@creative-biomart.com](mailto:info@creative-biomart.com)  Fax: 1-631-938-8127

 45-1 Ramsey Road, Shirley, NY 11967, USA