

Recombinant Human INIP Protein, GST-Tagged

Cat. No. INIP-0214H **Lot. No.** (See product label)

SPECIFICATION

Product Overview	Human C9orf80 full-length ORF (NP_067041.1, 1 a.a. - 104 a.a.) recombinant protein with GST-tag at N-terminal.
Species	Human
Source	Wheat Germ
Description	The protein encoded by this gene is a subunit of single-stranded DNA binding complexes that are important for maintaining genome stability. These complexes are involved in G2/M checkpoint control and homologous recombination repair. [provided by RefSeq, Jul 2016]
Molecular Mass	37.8 kDa
AA Sequence	MAANSSGQGFQNKNRVAILAELDKEKRKLLMQNQSSTNHPGASIALSRPSLNKDFR DHAEQQHIAAQKKAALQHAHAHSSGYFITQDSAFGNLILPVLPRLDPE
Applications	Enzyme-linked Immunoabsorbent Assay Western Blot (Recombinant protein) Antibody Production Protein Array
Storage	Store at -80 centigrade. Aliquot to avoid repeated freezing and thawing.
Storage Buffer	50 mM Tris-HCl, 10 mM reduced Glutathione, pH=8.0 in the elution buffer.

 Tel: 1-631-559-9269 1-516-512-3133

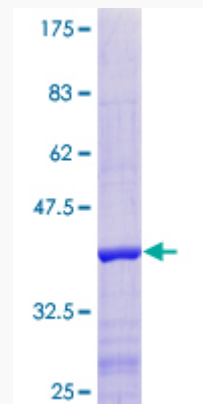
 Email: info@creative-biomart.com  Fax: 1-631-938-8127

 45-1 Ramsey Road, Shirley, NY 11967, USA

GENE INFORMATION

Gene Name	INIP INTS3 and NABP interacting protein [Homo sapiens]
Official Symbol	INIP
Synonyms	MISE; SOSSC; SSBIP1; C9orf80; HSPC043; hSSBIP1; RP11-276E15.2
Gene ID	58493
mRNA Refseq	NM_021218
Protein Refseq	NP_067041
MIM	613273
UniProt ID	Q9NRY2

Quality Control Testing



12.5% SDS-PAGE Stained with Coomassie Blue.

 Tel: 1-631-559-9269 1-516-512-3133

 Email: info@creative-biomart.com  Fax: 1-631-938-8127

 45-1 Ramsey Road, Shirley, NY 11967, USA