

Recombinant Human INPP4B Protein, Myc/DDK-tagged, C13 and N15-labeled

Cat. No. INPP4B-3965H Lot. No. (See product label)

SPECIFICATION

Product Overview

INPP4B MS Standard C13 and N15-labeled recombinant protein (NP_003857) with a C-terminal MYC/DDK tag, was expressed in HEK293 cells.

Species

Human

Source

HEK293

Description

INPP4B encodes the inositol polyphosphate 4-phosphatase type II, one of the enzymes involved in phosphatidylinositol signaling pathways. This enzyme removes the phosphate group at position 4 of the inositol ring from inositol 3,4-bisphosphate. There is limited data to suggest that the human type II enzyme is subject to alternative splicing, as has been established for the type I enzyme.

Molecular Mass

104.6 kDa

AA Sequence

MEIKEEGASEEGQHFLPTAQANDPGDCQFTSIQKTPNEPQLEFILACKDLVAPVRDR
 KLNTLVQISVIHPVEQSLTRYSSSTEIVEGTRDPLFLTGVTFPSEYPIYEETKIKLTVYDV
 KDKSHDTVRTSVLPEHKDPPPEVGRSFLGYASFVKGELLKSKEQLLVLSLRTSDGGK
 VVGITIEVSVVKMGEIEDGEADHITTDVQGQKCALVCECTAPESVSGKDNLPFLNSVL
 KNPVCKLYRFPTSDNKWMRIREQMSESILSFHIPKELISLHIKEDLCRNQEIKELGELS
 PHWDNLRKNVLTHCDQMVNMYQDILTELSKETGSSFKSSSSKGEKTLEFVPINLHLQ
 RMQVHSPHLKDALYDVITVGAPAAHFQGFKNGLRKLHFRFETERRNTGYQFIYYS
 PENTAKAKEVLSNINQLQPLIATHADLLLNSASQHSPLKNSLKMMLSEKTELFVHAF

 Tel: 1-631-559-9269 1-516-512-3133

 Email: info@creative-biomart.com  Fax: 1-631-938-8127

 45-1 Ramsey Road, Shirley, NY 11967, USA

KDQLVRSALLALYTARPGGILKKPPSPKSSTEESSPQDQPPVMRGQDSIPHHSDYD
 EEEWDRVWANVVGKSLNCIIAMVDKLIERDGGSEGGNNDGEKEPSLTDAIPSHPR
 EDWYEQLYPLILTLKDCMGEVVNRAKQSLTFVLLQELAYSLPQCLMLTLRRDIVFSQ
 ALAGLVCGFIIKLQTSLYDPGFLQQLHTVGLIVQYEGLLSTYSDEIGMLEDMAVGISDL
 KKVAFKIIEAKSNDVLPVITGRREHYVVEVKLPARMFESLPLQIKEGQLLHVYPVLFNV
 GINEQQTLAERFGDVSLQESINQENFELLQEYYKIFMEKMPPDYISHFQEQNDLKALL
 ENLLQNIQSKKRKNVEIMWLAATICRKLNGIRFTCCKSAKDRTSMSVTLEQCSILRDE
 HQLHKDFFIRALDCMRREGCRIENVLKNIKCRKYAFNMLQLMAFPKYRPPPEGTYGK
 ADTRTRPLEQKLISEEDLAANDILDYKDDDDKV

Purity > 80% as determined by SDS-PAGE and Coomassie blue staining

Stability Stable for 3 months from receipt of products under proper storage and handling conditions.

Storage Store at -80 centigrade. Avoid repeated freeze-thaw cycles.

Concentration 50 µg/mL as determined by BCA

Storage Buffer 100 mM glycine, 25 mM Tris-HCl, pH 7.3.

GENE INFORMATION

Gene Name [INPP4B inositol polyphosphate-4-phosphatase type II B \[Homo sapiens \(human\) \]](#)

Official Symbol [INPP4B](#)

Synonyms


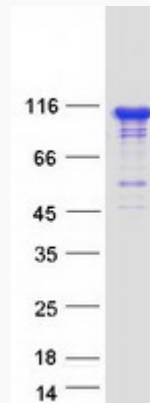
INPP4B; inositol polyphosphate-4-phosphatase, type II, 105kDa; inositol polyphosphate 4 phosphatase, type II, 105kD; type II inositol 3,4-bisphosphate 4-phosphatase; inositol polyphosphate 4-phosphatase type II; type II inositol-3,4-bisphosphate 4-phosphatase; inositol polyphosphate 4-phosphatase II; 4-

 Tel: 1-631-559-9269 1-516-512-3133

 Email: info@creative-biomart.com  Fax: 1-631-938-8127

 45-1 Ramsey Road, Shirley, NY 11967, USA

phosphatase II; MGC132014;

Gene ID 8821**mRNA Refseq** NM_003866**Protein Refseq** NP_003857**MIM** 607494**UniProt ID** O15327**SDS-PAGE** Tel: 1-631-559-9269 1-516-512-3133 Email: info@creative-biomart.com  Fax: 1-631-938-8127 45-1 Ramsey Road, Shirley, NY 11967, USA