

Recombinant Human INPP4B Protein, GST-tagged

Cat. No. INPP4B-5109H **Lot. No.** (See product label)

SPECIFICATION

Product Overview	Human INPP4B full-length ORF (AAH05273, 1 a.a. - 53 a.a.) recombinant protein with GST-tag at N-terminal.
Species	Human
Source	Wheat Germ
Description	INPP4B encodes the inositol polyphosphate 4-phosphatase type II, one of the enzymes involved in phosphatidylinositol signaling pathways. This enzyme removes the phosphate group at position 4 of the inositol ring from inositol 3,4-bisphosphate. There is limited data to suggest that the human type II enzyme is subject to alternative splicing, as has been established for the type I enzyme. [provided by RefSeq]
Molecular Mass	31.57 kDa
AA Sequence	MEIKEEGASEEGQHFLPTAQANDPGDCQFTSIQKTPNEPQLEFILDNLNQLRD
Applications	Enzyme-linked Immunoabsorbent Assay Western Blot (Recombinant protein) Antibody Production Protein Array
Notes	Best use within three months from the date of receipt of this protein.

 Tel: 1-631-559-9269 1-516-512-3133

 Email: info@creative-biomart.com  Fax: 1-631-938-8127

 45-1 Ramsey Road, Shirley, NY 11967, USA

Storage Store at -80 centigrade. Aliquot to avoid repeated freezing and thawing.

Storage Buffer 50 mM Tris-HCl, 10 mM reduced Glutathione, pH=8.0 in the elution buffer.

GENE INFORMATION

Gene Name [INPP4B inositol polyphosphate-4-phosphatase, type II, 105kDa \[Homo sapiens \]](#)

Official Symbol [INPP4B](#)

Synonyms INPP4B; inositol polyphosphate-4-phosphatase, type II, 105kDa; inositol polyphosphate 4 phosphatase, type II, 105kD; type II inositol 3,4-bisphosphate 4-phosphatase; inositol polyphosphate 4-phosphatase type II; type II inositol-3,4-bisphosphate 4-phosphatase; inositol polyphosphate 4-phosphatase II; 4-phosphatase II; MGC132014;

Gene ID [8821](#)

mRNA Refseq [NM_001101669](#)

Protein Refseq [NP_001095139](#)

MIM [607494](#)

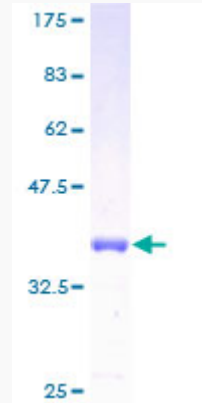
UniProt ID [O15327](#)

 Tel: 1-631-559-9269 1-516-512-3133

 Email: info@creative-biomart.com  Fax: 1-631-938-8127

 45-1 Ramsey Road, Shirley, NY 11967, USA

**Quality Control
Testing**



12.5% SDS-PAGE Stained with Coomassie Blue

 Tel: 1-631-559-9269 1-516-512-3133

 Email: info@creative-biomart.com  Fax: 1-631-938-8127

 45-1 Ramsey Road, Shirley, NY 11967, USA