

# Recombinant Human INPP4B Protein, Myc/DDK-tagged, C13 and N15-labeled

Cat. No. INPP4B-6257H Lot. No. (See product label)

## SPECIFICATION

**Product Overview** INPP4B MS Standard C13 and N15-labeled recombinant protein (NP\_001095139) with a C-terminal MYC/DDK tag, was expressed in HEK293 cells.

**Species** Human

**Source** HEK293

**Description** INPP4B encodes the inositol polyphosphate 4-phosphatase type II, one of the enzymes involved in phosphatidylinositol signaling pathways. This enzyme removes the phosphate group at position 4 of the inositol ring from inositol 3,4-bisphosphate. There is limited data to suggest that the human type II enzyme is subject to alternative splicing, as has been established for the type I enzyme.

**Molecular Mass** 104.6 kDa

**AA Sequence**

```

MEIKEEGASEEGQHFLPTAQANDPGDCQFTSIQKTPNEPQLEFILACKDLVAPVRDR
KLNTLVQISVIHPVEQSLTRYSSSTEIVEGTRDPLFLTGVTFPSEYPIYEETKIKLTVYDV
KDKSHDTVRTSVLPEHKDPPPEVGRSFLGYASFVKGELLKSKEQLLVLSLRTSDGGK
VVG TIEVSVVKMGEIEDGEADHITTDVQGQKCALVCECTAPESVSGKDNLPFLNSVL
KNPVCKLYRFPTSDNKWMRIREQMSESILSFHIPKELISLHIKEDLCRNQEIKELGELS
PHWDNLRKNVLTHCDQMVNMYQDILTELSKETGSSFKSSSSKGEKTLEFVPINLHLQ
RMQVHSPHLKDALYDVITVGAPAAHFQGFKNGGLRKL LHRFETERRNTGYQFIYYS
PENTAKAKEVLSNINQLQPLIATHADLLLNSASQHS PDSLKNSLKM LSEKTELFVHAF
    
```

 Tel: 1-631-559-9269 1-516-512-3133

 Email: [info@creative-biomart.com](mailto:info@creative-biomart.com)  Fax: 1-631-938-8127

 45-1 Ramsey Road, Shirley, NY 11967, USA



KDQLVRSALLALYTARPGGILKKPPSPKSSTEESSPQDQPPVMRGQDSIPHHSDYD  
 EEEWDRVWANVVGKSLNCIIAMVDKLIERDGGSEGSGGNNDGEKEPSLTDAIPSHPR  
 EDWYEQLYPLILTLKDCMGEVVNRAKQSLTFVLLQELAYSLPQCLMLTLRRDIVFSQ  
 ALAGLVCGFIIKLQTSLYDPGFLQQLHTVGLIVQYEGLLSTYSDEIGMLEDMAVGISDL  
 KKVAFKIIEAKSNDVLPVITGRREHYVVEVKLPARMFESLPLQIKEGQLLHVYPVLFNV  
 GINEQQTLAERFGDVSLQESINQENFELLQEYYKIFMEKMPPDYISHFQEQNDLKALL  
 ENLLQNIQSKKRKNVEIMWLAATICRKLNGIRFTCCKSAKDRTSMSVTLEQCSILRDE  
 HQLHKDFFIRALDCMRREGCRIENVLKNIKCRKYAFNMLQLMAFPKYRPPPEGTYGK  
 ADTRTRPLEQKLISEEDLAANDILDYKDDDDKV

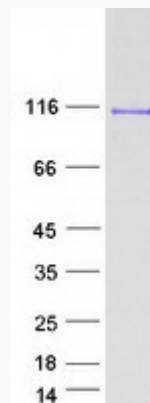
<b>Purity</b>	> 80% as determined by SDS-PAGE and Coomassie blue staining
<b>Stability</b>	Stable for 3 months from receipt of products under proper storage and handling conditions.
<b>Storage</b>	Store at -80 centigrade. Avoid repeated freeze-thaw cycles.
<b>Concentration</b>	50 µg/mL as determined by BCA
<b>Storage Buffer</b>	100 mM glycine, 25 mM Tris-HCl, pH 7.3.

## GENE INFORMATION

<b>Gene Name</b>	INPP4B inositol polyphosphate-4-phosphatase type II B [ Homo sapiens (human) ]
<b>Official Symbol</b>	INPP4B
<b>Synonyms</b>	INPP4B; inositol polyphosphate-4-phosphatase, type II, 105kDa; inositol polyphosphate 4 phosphatase, type II, 105kD; type II inositol 3,4-bisphosphate 4-phosphatase; inositol polyphosphate 4-phosphatase type II; type II inositol-3,4-bisphosphate 4-phosphatase; inositol polyphosphate 4-phosphatase II; 4-

- Tel: 1-631-559-9269 1-516-512-3133
- Email: [info@creative-biomart.com](mailto:info@creative-biomart.com) Fax: 1-631-938-8127
- 45-1 Ramsey Road, Shirley, NY 11967, USA

phosphatase II; MGC132014;

**Gene ID** 8821**mRNA Refseq** NM\_001101669**Protein Refseq** NP\_001095139**MIM** 607494**UniProt ID** O15327**SDS-PAGE** Tel: 1-631-559-9269 1-516-512-3133 Email: [info@creative-biomart.com](mailto:info@creative-biomart.com)  Fax: 1-631-938-8127 45-1 Ramsey Road, Shirley, NY 11967, USA