

Recombinant Human INPP5D Protein, Myc/DDK-tagged, C13 and N15-labeled

Cat. No. INPP5D-5966H **Lot. No.** (See product label)

SPECIFICATION

Product Overview

INPP5D MS Standard C13 and N15-labeled recombinant protein (NP_005532) with a C-terminal MYC/DDK tag, was expressed in HEK293 cells.

Species

Human

Source

HEK293

Description

This gene is a member of the inositol polyphosphate-5-phosphatase (INPP5) family and encodes a protein with an N-terminal SH2 domain, an inositol phosphatase domain, and two C-terminal protein interaction domains. Expression of this protein is restricted to hematopoietic cells where its movement from the cytosol to the plasma membrane is mediated by tyrosine phosphorylation. At the plasma membrane, the protein hydrolyzes the 5' phosphate from phosphatidylinositol (3,4,5)-trisphosphate and inositol-1,3,4,5-tetrakisphosphate, thereby affecting multiple signaling pathways. The protein is also partly localized to the nucleus, where it may be involved in nuclear inositol phosphate signaling processes. Overall, the protein functions as a negative regulator of myeloid cell proliferation and survival. Mutations in this gene are associated with defects and cancers of the immune system. Alternative splicing of this gene results in multiple transcript variants.

Molecular Mass

133 kDa

AA Sequence

MVPCWNHGNITRSKAEELLSRTGKDGSLVRASESISRAYALCVLYRNCVYTYRILP

 Tel: 1-631-559-9269 1-516-512-3133

 Email: info@creative-biomart.com  Fax: 1-631-938-8127

 45-1 Ramsey Road, Shirley, NY 11967, USA

NEDDKFTVQASEGVSMRFFTKLDQLIEFYKKENMGLVTHLQYPVPLEEEDTGDDPE
 EDTESVVSPPPELPPRNIPLTASSCEAKEVPFSNENPRATETSRPSLSETLFQRLQSM
 DTSGLPPEHLKAIQDYLLSTQLAQDSEFVKTGSSSLPHLKKLTLLCKELYGEVIRTLPS
 LESLQRLFDQQLSPGLRPRPQVPGEANPINMVSKLSQLTSLSSIEDKVKALLHEGP
 ESPHRPSLIPPVTFEVKAESLGIPQKMQLKVDVESGKLIKKSKDGSSEDKFYSHKKILQ
 LIKSQKFLNKLVLVETEKEKILRKEYVVFADSKKREGFCQLLQQMKNKHSEQPEPDMI
 TIFIGTWNMGNAPPPKITSWFLSKGQGKTRDDSADYIPHDIYVIGTQEDPLSEKEWL
 EILKHSLEITSVTFKTVAIHTLWNIRIVVLAKPEHENRISHICTDNVKTGIANTLGNKGA
 VGVSFMFNGTSLGFVNSHLTSGSEKKLRRNQNYMNILRFLALGDKKLSPFNITHRFT
 HLFWFGDLNRYVDLPTWEAETIIQKIKQQYADLLSHDQLLTERREQVFLHFEEEEI
 TFAPTYRFERLTRDKYAYTKQKATGMKYNLPSWCDRVLWKSYPVHVVCQSYGST
 SDIMTSDHSPVFATFEAGVTSQFVSKNGPGTVDSQGQIEFLRCYATLTKTSQTKFYL
 EFHSSCLESFVKSQEGENESEGELVVKFGETLPKPKPIISDPEYLLDQHILISIKSS
 DSDESYGEGCIALRLEATETQLPIYTPLTHHGELTGHFQGEIKLQTSQGKTREKLYDF
 VKTERDESSGPKTLKSLTSHDPMKQWEVTSRAPPCSGSSITEIINPNYMGVGPFGPP
 MPLHVKQTLSPDQQPTAWSYDQPPKDSPLGPCRGESPTPPGQPPISPKKFLPSTA
 NRGLPPRTQESRPSDLGKNAGDTLPQEDLPLTKPEMFENPLYGSLSSFPKPAPRKD
 QESPKMPRKEPPPCPEPGILSPSIVLTKAQEADRGEKQVPAAPRLRSFTCSSSA
 EGRAAGGDKSQGKPKTPVSSQAPVPAKRPIKPSRSEINQQTPPTPTPRPPLPVKSP
 AVLHLQHSKGRDYRDNTELPHHGKHRPEEGPPGLGRTAMQTRTRPLEQKLISEED
 LAANDILDYKDDDDKV

Purity > 80% as determined by SDS-PAGE and Coomassie blue staining

Stability Stable for 3 months from receipt of products under proper storage and handling conditions.

Storage Store at -80 centigrade. Avoid repeated freeze-thaw cycles.

Concentration 50 µg/mL as determined by BCA

 Tel: 1-631-559-9269 1-516-512-3133

 Email: info@creative-biomart.com  Fax: 1-631-938-8127

 45-1 Ramsey Road, Shirley, NY 11967, USA

Storage Buffer 100 mM glycine, 25 mM Tris-HCl, pH 7.3.

GENE INFORMATION

Gene Name [INPP5D inositol polyphosphate-5-phosphatase D \[Homo sapiens \(human\) \]](#)

Official Symbol [INPP5D](#)

Synonyms

INPP5D; inositol polyphosphate-5-phosphatase, 145kDa; inositol polyphosphate 5 phosphatase, 145kD; phosphatidylinositol 3,4,5-trisphosphate 5-phosphatase 1; hp51CN; SHIP; SHIP-1; p150Ship; SH2 domain-containing inositol phosphatase 1; SH2 containing inositol phosphatase, isoform b; SH2 domain-containing inositol 5-phosphatase 1; SH2 domain-containing inositol-5-phosphatase 1; inositol polyphosphate-5-phosphatase of 145 kDa; signaling inositol polyphosphate 5 phosphatase SIP-145; phosphatidylinositol-3,4,5-trisphosphate 5-phosphatase 1; SHIP1; SIP-145; MGC104855; MGC142140; MGC142142;

Gene ID [3635](#)

mRNA Refseq [NM_005541](#)

Protein Refseq [NP_005532](#)

MIM [601582](#)

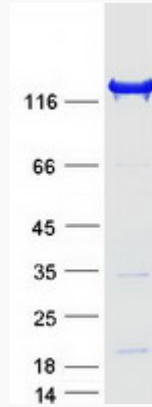
UniProt ID [Q92835](#)

 Tel: 1-631-559-9269 1-516-512-3133

 Email: info@creative-biomart.com  Fax: 1-631-938-8127

 45-1 Ramsey Road, Shirley, NY 11967, USA

SDS-PAGE



 Tel: 1-631-559-9269 1-516-512-3133

 Email: info@creative-biomart.com  Fax: 1-631-938-8127

 45-1 Ramsey Road, Shirley, NY 11967, USA