

Recombinant Full Length Human INPP5D Protein, C-Flag-tagged

Cat. No. INPP5D-718HFL Lot. No. (See product label)

SPECIFICATION

Product Overview

Recombinant Full Length Human INPP5D Protein, fused to Flag-tag at C-terminus, was expressed in Mammalian cells.

Species

Human

Source

Mammalian Cells

Description

This gene is a member of the inositol polyphosphate-5-phosphatase (INPP5) family and encodes a protein with an N-terminal SH2 domain, an inositol phosphatase domain, and two C-terminal protein interaction domains. Expression of this protein is restricted to hematopoietic cells where its movement from the cytosol to the plasma membrane is mediated by tyrosine phosphorylation. At the plasma membrane, the protein hydrolyzes the 5' phosphate from phosphatidylinositol (3,4,5)-trisphosphate and inositol-1,3,4,5-tetrakisphosphate, thereby affecting multiple signaling pathways. The protein is also partly localized to the nucleus, where it may be involved in nuclear inositol phosphate signaling processes. Overall, the protein functions as a negative regulator of myeloid cell proliferation and survival. Mutations in this gene are associated with defects and cancers of the immune system. Deficiencies in the encoded protein, SHIP1, have been associated with Inflammatory Bowel Disease types such as Crohn's Disease and Ulcerative Colitis. Alternative splicing of this gene results in multiple transcript variants.

Form

25 mM Tris HCl, pH 7.3, 100 mM glycine, 10% glycerol.

 Tel: 1-631-559-9269 1-516-512-3133

 Email: info@creative-biomart.com  Fax: 1-631-938-8127

 45-1 Ramsey Road, Shirley, NY 11967, USA

Molecular Mass 133 kDa

AA Sequence

MVPCWNHGNITRSKAEELLSRTGKDGSLVRASESISRAYALCVLYRNCVYTYRILP
NEDDKFTVQASEG VSMRFFTKLDQLIEFYKKNMGLVTHLQYPVPLEEEDTGDDPE
EDTESVVSPPPELPPRNIPLTASSCEAK EVPFSNENPRATETSRPSLSETLFQRLQSM
DTSGLPPEHLKAIQDYLLSTQLAQDSEFVKTGSSSLPHLKK LTTLLCKELYGEVIRTLP
SLESQRLFDQQLSPGLRPRPQVPGEANPINMVSKLSQLTSLSSIEDKVKA LLHEG
PESPHRPSLIPPVTFEVKAESLGIPQKMQLKVDVESGKLIKKSKDGSSEDKFYSHKKIL
QLIKSQ KFLNKLVLVETEKEKILRKEYVFADSKKREGFCQLLQQMKNKHSEQPEPD
MITIFIGTWNMGNAPPPKK ITSWFLSKGQKTRDDSDADYIPHDYVIGTQEDPLSEKE
WLEILKHSLEITSVTFKTVAIHTLWNIRIV VLAKEPHENRISHICTDNVKTGIANTLGN
KGAVGVSMFNGTSLGFVNSHLTSGSEKLLRRNQNYMNILR FLALGDKKLSPFNIT
HRFTHLFWFGDLNRYVDLPTWEAETIIQKIKQQYADLLSHDQLLTERREQKVFL HF
EEEEITFAPTYRFERLTRDKYAYTKQKATGMKYNLPSWCDRVLWKSYPVHVVCQS
YGSTSDIMTSDH SPVFATFEAGVTSQFVSKNGPGTVDSQGQIEFLRCYATLKTKSQ
TKFYLEFHSSCLESFVKSQEGENEENEG SEGELVVKFGETLPKLPKPIISDPEYLLDQHILI
SIKSSDSDESYGEGCIALRLEATETQLPIYTPLTHHG ELTGHFQGEIKLQTSQGKTRE
KLYDFVKTERDESSGPKTLKSLTSHDPMKQWEVTSRAPPCSGSSITEII NPNYMGV
GPFGPPMPLHVKQTLSPDQQPTAWSYDQPPKDSPLGPCRGESPPTPPGQPPISP
KFLPSTAN RGLPPRTQESRPSDLGKNAGDTLPQEDLPLTKPEMFENPLYGSLSSFP
KPAPRKDQESPKMPRKEPPPCP EPGILSPSIVLTKAQEADRGEPPGKQVPAPRLRS
FTCSSAEGRAAGDKSQGKPKTPVSSQAPVPAKRP IKPSRSEINQQTPPTPTPRP
PLPVKSPAVLHLQHSKGRDYRDNTELPHHGKHRPEEGPPGPLGRTAMQTRTRPLE
QKLISEEDLAANDILDYKDDDDKV

Purity > 80% as determined by SDS-PAGE and Coomassie blue staining.

Stability Stable for 12 months from the date of receipt of the product under proper storage and handling conditions. Avoid repeated freeze-thaw cycles.

 Tel: 1-631-559-9269 1-516-512-3133

 Email: info@creative-biomart.com  Fax: 1-631-938-8127

 45-1 Ramsey Road, Shirley, NY 11967, USA

Storage	Store at -80 centigrade.
Concentration	>50 ug/mL as determined by microplate BCA method.
Preparation	Recombinant protein was captured through anti-DDK affinity column followed by conventional chromatography steps.
Protein Families	Druggable Genome
Protein Pathways	B cell receptor signaling pathway, Fc epsilon RI signaling pathway, Fc gamma R-mediated phagocytosis, Insulin signaling pathway, Phosphatidylinositol signaling system
Full Length	Full L.

GENE INFORMATION

Gene Name	INPP5D inositol polyphosphate-5-phosphatase D [Homo sapiens (human)]
Official Symbol	INPP5D
Synonyms	SHIP; SHIP1; SHIP-1; hp51CN; SIP-145; p150Ship
Gene ID	3635
mRNA Refseq	NM_005541.5
Protein Refseq	NP_005532.2
MIM	601582

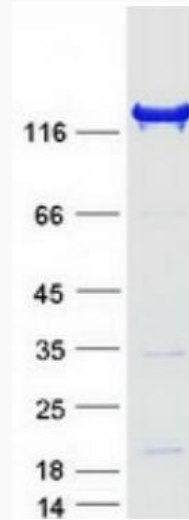
 Tel: 1-631-559-9269 1-516-512-3133

 Email: info@creative-biomart.com  Fax: 1-631-938-8127


 45-1 Ramsey Road, Shirley, NY 11967, USA

UniProt ID


Q92835



Coomassie blue staining of purified INPP5D protein.

 Tel: 1-631-559-9269 1-516-512-3133

 Email: info@creative-biomart.com  Fax: 1-631-938-8127

 45-1 Ramsey Road, Shirley, NY 11967, USA