

# Recombinant Human INPP5K Protein, Myc/DDK-tagged, C13 and N15-labeled

Cat. No. INPP5K-2027H Lot. No. (See product label)

## SPECIFICATION

### Product Overview

INPP5K MS Standard C13 and N15-labeled recombinant protein (NP\_570122) with a C-terminal MYC/DDK tag, was expressed in HEK293 cells.

### Species

Human

### Source

HEK293

### Description

This gene encodes a protein with 5-phosphatase activity toward polyphosphate inositol. The protein localizes to the cytosol in regions lacking actin stress fibers. It is thought that this protein may negatively regulate the actin cytoskeleton. Alternatively spliced transcript variants encoding different isoforms have been identified.

### Molecular Mass

51.1 kDa

### AA Sequence

```
MSSRKLSGPKGRRLSIHVVTWNVASAAPPLDLSDLLQLNNRNLNLDIYVIGLQELNS
GIISLLSDAAFNDSSWSSFLMDVLSPLSFIKVS HV RMQGILLLVFAKYQHLPYIQILSTKS
TPTGLFGYWGNKGGVNICLKLYGYYVSIINCHLPPHISNNYQRLEHFDRILEMQNCE
GRDIPNILDHDLIIWFGDMNFRIEDFGLHFVRESIKNRCYGGGLWEKDQLSIAKKHDP LL
REFQEGRLLFPPTYKFDRNSNDYDTSEKKRKP AWTD RILWRLKRQPCAGPDTPIPP
ASHFSLSLRGYSSHMTYGISDHKPVSGTFDLELKPLVSAPLIVLMPEDLWTVENDMM
VSYSSSTSDFPSSPWDWIGLYKVGLRDVNDYVSYAWVGDSKVSCSDNLNQQVYIDISNI
PTTEDEFLLCYYSNSLRSVVGISRPFQIPPGSLREDPLGEAQPQITRTRPLEQKLISEE
DLAANDILDYKDDDDKV
```

Tel: 1-631-559-9269 1-516-512-3133

Email: [info@creative-biomart.com](mailto:info@creative-biomart.com) Fax: 1-631-938-8127

45-1 Ramsey Road, Shirley, NY 11967, USA

<b>Purity</b>	> 80% as determined by SDS-PAGE and Coomassie blue staining
<b>Stability</b>	Stable for 3 months from receipt of products under proper storage and handling conditions.
<b>Storage</b>	Store at -80 centigrade. Avoid repeated freeze-thaw cycles.
<b>Concentration</b>	50 µg/mL as determined by BCA
<b>Storage Buffer</b>	100 mM glycine, 25 mM Tris-HCl, pH 7.3.

## GENE INFORMATION

<b>Gene Name</b>	INPP5K inositol polyphosphate-5-phosphatase K [ Homo sapiens (human) ]
<b>Official Symbol</b>	INPP5K
<b>Synonyms</b>	INPP5K; inositol polyphosphate-5-phosphatase K; inositol polyphosphate 5-phosphatase K; skeletal muscle and kidney enriched inositol phosphatase; SKIP; skeletal muscle and kidney-enriched inositol phosphatase; PPS;
<b>Gene ID</b>	51763
<b>mRNA Refseq</b>	NM_130766
<b>Protein Refseq</b>	NP_570122
<b>MIM</b>	607875
<b>UniProt ID</b>	Q9BT40

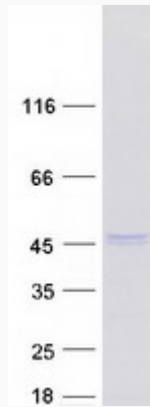
 Tel: 1-631-559-9269 1-516-512-3133

 Email: [info@creative-biomart.com](mailto:info@creative-biomart.com)  Fax: 1-631-938-8127

 45-1 Ramsey Road, Shirley, NY 11967, USA



SDS-PAGE



Tel: 1-631-559-9269 1-516-512-3133

Email: [info@creative-biomart.com](mailto:info@creative-biomart.com) Fax: 1-631-938-8127

45-1 Ramsey Road, Shirley, NY 11967, USA