

## Recombinant Human INPP5K Protein, GST-tagged

Cat. No. INPP5K-5104H Lot. No. (See product label)

### SPECIFICATION

<b>Product Overview</b>	Human INPP5K full-length ORF ( AAH04362, 1 a.a. - 448 a.a.) recombinant protein with GST-tag at N-terminal.
<b>Species</b>	Human
<b>Source</b>	Wheat Germ
<b>Description</b>	This gene encodes a protein with 5-phosphatase activity toward polyphosphate inositol. The protein localizes to the cytosol in regions lacking actin stress fibers. It is thought that this protein may negatively regulate the actin cytoskeleton. Alternatively spliced transcript variants encoding different isoforms have been identified. [provided by RefSeq]
<b>Molecular Mass</b>	74.8 kDa
<b>AA Sequence</b>	MSSRKLSGPKGRRLSIHVVTWNVASAAPPLDLSDLLQLNNRNLNPDIIYVIGLQELNS GIISLLSDAAFNDWSWSSFLMDVLSPLSFIKIVSHVRMQGILLLVFAKYQHLPYIQILSTKS TPTGLFGYWGNKGGVNICLKLYGYVSIINCHLPPHISNNYQRLEHFDRILEMQNCE GRDIPNILDHDLIIWFGDMNFRIEDFGLRFVRESIKNRCYGGWLWEKDQLSIAKKHDPDLL REFQEGRLLFPPTYKFDRNSNDYDTSEKKRKPWTDRLWRLKRQPCAGPDTPIPP ASHFSLSLRGYSSHMTYGISDHKPVSGTFDLELKPLVSAPLIVLMPEDLWTVENDMM VSYSTSDFPSSPWDWIGLYKVGLRDVNDYVSYAWVGDSKVSCSDNLNQVYIDISNI PTTEDEFLLCYYSNSLRSVVGISRPFQIPPGSLREDPLGEAQPQI
<b>Applications</b>	Enzyme-linked Immunoabsorbent Assay

 Tel: 1-631-559-9269 1-516-512-3133

 Email: [info@creative-biomart.com](mailto:info@creative-biomart.com)  Fax: 1-631-938-8127

 45-1 Ramsey Road, Shirley, NY 11967, USA

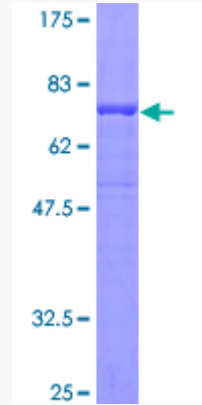
	Western Blot (Recombinant protein) Antibody Production Protein Array
<b>Notes</b>	Best use within three months from the date of receipt of this protein.
<b>Storage</b>	Store at -80 centigrade. Aliquot to avoid repeated freezing and thawing.
<b>Storage Buffer</b>	50 mM Tris-HCl, 10 mM reduced Glutathione, pH=8.0 in the elution buffer.
<b>GENE INFORMATION</b>	
<b>Gene Name</b>	INPP5K inositol polyphosphate-5-phosphatase K [ Homo sapiens ]
<b>Official Symbol</b>	INPP5K
<b>Synonyms</b>	INPP5K; inositol polyphosphate-5-phosphatase K; inositol polyphosphate 5-phosphatase K; skeletal muscle and kidney enriched inositol phosphatase; SKIP; skeletal muscle and kidney-enriched inositol phosphatase; PPS;
<b>Gene ID</b>	51763
<b>mRNA Refseq</b>	NM_001135642
<b>Protein Refseq</b>	NP_001129114
<b>MIM</b>	607875
<b>UniProt ID</b>	Q9BT40

 Tel: 1-631-559-9269 1-516-512-3133

 Email: [info@creative-biomart.com](mailto:info@creative-biomart.com)  Fax: 1-631-938-8127

 45-1 Ramsey Road, Shirley, NY 11967, USA

**Quality Control  
Testing**



12.5% SDS-PAGE Stained with Coomassie Blue

 Tel: 1-631-559-9269 1-516-512-3133

 Email: [info@creative-biomart.com](mailto:info@creative-biomart.com)  Fax: 1-631-938-8127

 45-1 Ramsey Road, Shirley, NY 11967, USA