

Recombinant Human INPPL1 Protein, GST-tagged

Cat. No. INPPL1-5101H Lot. No. (See product label)

SPECIFICATION

Product Overview	Human INPPL1 partial ORF (NP_001558, 1159 a.a. - 1258 a.a.) recombinant protein with GST-tag at N-terminal.
Species	Human
Source	Wheat Germ
Description	The protein encoded by this gene is an SH2-containing 5-inositol phosphatase that is involved in the regulation of insulin function. The encoded protein also plays a role in the regulation of epidermal growth factor receptor turnover and actin remodelling. Additionally, this gene supports metastatic growth in breast cancer and is a valuable biomarker for breast cancer. [provided by RefSeq]
Molecular Mass	36.74 kDa
AA Sequence	PSDYGRPLSFPPPRIRESIQEDLAEAPCLQGGRASGLGEAGMSAWLRAIGLERYE EGLVHNGWDDLEFLSDITEEDLEEAGVQDPAHKRLLLLDTLQLSK
Applications	Enzyme-linked Immunoabsorbent Assay Western Blot (Recombinant protein) Antibody Production Protein Array
Notes	Best use within three months from the date of receipt of this protein.

 Tel: 1-631-559-9269 1-516-512-3133

 Email: info@creative-biomart.com  Fax: 1-631-938-8127

 45-1 Ramsey Road, Shirley, NY 11967, USA

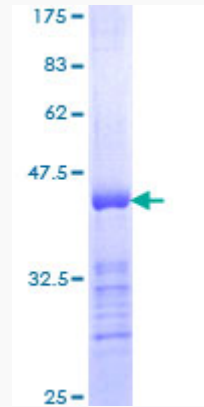
Storage	Store at -80 centigrade. Aliquot to avoid repeated freezing and thawing.
Storage Buffer	50 mM Tris-HCl, 10 mM reduced Glutathione, pH=8.0 in the elution buffer.
GENE INFORMATION	
Gene Name	INPPL1 inositol polyphosphate phosphatase-like 1 [Homo sapiens]
Official Symbol	INPPL1
Synonyms	INPPL1; inositol polyphosphate phosphatase-like 1; phosphatidylinositol 3,4,5-trisphosphate 5-phosphatase 2; 51C protein; SHIP2; SHIP-2; INPPL-1; protein 51C; SH2 domain-containing inositol 5-phosphatase 2; SH2 domain-containing inositol-5-phosphatase 2; phosphatidylinositol-3,4,5-trisphosphate 5-phosphatase 2;
Gene ID	3636
mRNA Refseq	NM_001567
Protein Refseq	NP_001558
MIM	600829
UniProt ID	O15357

 Tel: 1-631-559-9269 1-516-512-3133

 Email: info@creative-biomart.com  Fax: 1-631-938-8127

 45-1 Ramsey Road, Shirley, NY 11967, USA

**Quality Control
Testing**



12.5% SDS-PAGE Stained with Coomassie Blue

 Tel: 1-631-559-9269 1-516-512-3133

 Email: info@creative-biomart.com  Fax: 1-631-938-8127

 45-1 Ramsey Road, Shirley, NY 11967, USA