

Recombinant Chicken INS Protein, His-tagged

Cat. No. INS-2689C Lot. No. (See product label)

SPECIFICATION

Product Overview	Recombinant Chicken INS Protein (Ala25-Ala54+GGGGS+Gly87-Asn107) with N-His tag was expressed in E. coli.
Species	Chicken
Source	E.coli
ProteinLength	Ala25-Ala54+GGGGS+Gly87-Asn107
Description	Insulin is a hormone made in your pancreas, a gland located behind your stomach. It allows your body to use glucose for energy. Glucose is a type of sugar found in many carbohydrates. After a meal or snack, the digestive tract breaks down carbohydrates and changes them into glucose.
Form	Freeze-dried powder
Molecular Mass	Predicted Molecular Mass: 9.7 kDa Accurate Molecular Mass: 12 kDa
Purity	> 90%
Applications	Positive Control; Immunogen; SDS-PAGE; WB.
Stability	The thermal stability is described by the loss rate. The loss rate was determined by accelerated thermal degradation test, that is, incubate the protein at 37 centigrade for

 Tel: 1-631-559-9269 1-516-512-3133

 Email: info@creative-biomart.com  Fax: 1-631-938-8127

 45-1 Ramsey Road, Shirley, NY 11967, USA

48h, and no obvious degradation and precipitation were observed. The loss rate is less than 5% within the expiration date under appropriate storage condition.

Storage

Avoid repeated freeze/thaw cycles. Store at 2-8 centigrade for one month. Aliquot and store at -80 centigrade for 12 months.

Storage Buffer

20mM Tris, 150mM NaCl, pH8.0, containing 1mM EDTA, 1mM DTT, 0.01% SKL, 5% Trehalose and Proclin300.

Reconstitution

Reconstitute in 20mM Tris, 150mM NaCl (pH8.0) to a concentration of 0.1-1.0 mg/mL. Do not vortex.

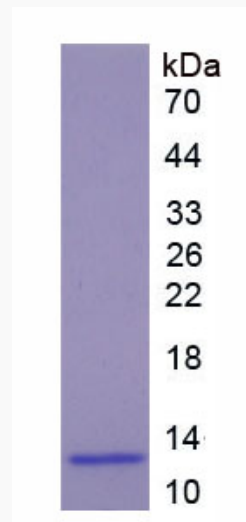
GENE INFORMATION


Official Symbol

INS

Synonyms

Insulin; ins



 Tel: 1-631-559-9269 1-516-512-3133

 Email: info@creative-biomart.com  Fax: 1-631-938-8127

 45-1 Ramsey Road, Shirley, NY 11967, USA