

## Recombinant Human INS protein

**Cat. No.** INS-29H    **Lot. No.** (See product label)

### SPECIFICATION

<b>Product Overview</b>	Recombinant Human INS protein(P01308)(55-89 aa) was expressed in E.coli.
<b>Species</b>	Human
<b>Source</b>	E.coli
<b>ProteinLength</b>	55-89 aa
<b>Form</b>	Lyophilized from a 0.2 µ filtered solution in PBS, pH 7.4.
<b>Molecular Mass</b>	Approximately 3.6 kDa, a single non-glycosylated polypeptide chain containing 35 amino acids.
<b>AASequence</b>	RREAEDLQVG QVELGGGPGA GSLQPLALEG SLQKR
<b>Endotoxin</b>	Less than 0.1 EU/g of rHuProinsulin C-Peptide Analogue as determined by LAL method.
<b>Purity</b>	>95% by SDS-PAGE and HPLC analyses.
<b>Storage</b>	Use a manual defrost freezer and avoid repeated freeze-thaw cycles. - 12 months from date of receipt, -20 to -70 °C as supplied. - 1 month, 2 to 8 °C under sterile conditions after reconstitution. - 3 months, -20 to -70 °C under sterile conditions after reconstitution.

 Tel: 1-631-559-9269    1-516-512-3133

 Email: [info@creative-biomart.com](mailto:info@creative-biomart.com)     Fax: 1-631-938-8127

 45-1 Ramsey Road, Shirley, NY 11967, USA

**Reconstitution**

We recommend that this vial be briefly centrifuged prior to opening to bring the contents to the bottom. Reconstitute in sterile distilled water or aqueous buffer containing 0.1 % BSA to a concentration of 0.1-1.0 mg/mL. Stock solutions should be apportioned into working aliquots and stored at  $\leq -20$  °C. Further dilutions should be made in appropriate buffered solutions.

**GENE INFORMATION**

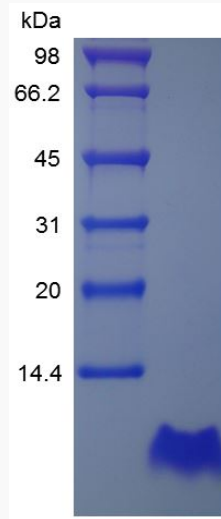
Gene Name	INS insulin [ Homo sapiens ]
Official Symbol	INS
Synonyms	INS; insulin; proinsulin; ILPR; IRDN; IDDM2; MODY10;
Gene ID	3630
mRNA Refseq	NM_000207
Protein Refseq	NP_000198
UniProt ID	P01308

 Tel: 1-631-559-9269 1-516-512-3133

 Email: [info@creative-biomart.com](mailto:info@creative-biomart.com)  Fax: 1-631-938-8127

 45-1 Ramsey Road, Shirley, NY 11967, USA

**SDS-PAGE**



 Tel: 1-631-559-9269 1-516-512-3133

 Email: [info@creative-biomart.com](mailto:info@creative-biomart.com)  Fax: 1-631-938-8127

 45-1 Ramsey Road, Shirley, NY 11967, USA