

Active Recombinant Human INS protein

Cat. No. INS-320H Lot. No. (See product label)

SPECIFICATION

Product Overview	Active Recombinant Human insulin B chain (2LGB_B)(Phe1-Lys29) and human insulin A chain (2KXK_A)(Gly1-Asn21) was expressed in Yeast with a linker AAK.
Species	Human
Source	Yeast
ProteinLength	1-29 aa & 1-21 aa
Form	Lyophilized from sterile PBS, pH 7.4.
Bio-activity	Measured in a serum-free cell liferation assay using MCF7 human breast cancer cells. The ED50 for this effect is typically 0.2-1 µg/mL.
Molecular Mass	The recombinant human Insulin consists of 63 amino acids and predicts a molecular mass of 7 KDa.
Purity	> 95 % as determined by SDS-PAGE
Storage	Store it under sterile conditions at -20°C to -80°C upon receiving. Recommend to aliquot the protein into smaller quantities for optimal storage. Avoid repeated freeze-thaw cycles.
Reconstitution	It is recommended that sterile water be added to the vial to prepare a stock solution of 0.2 ug/ul. Centrifuge the vial at 4°C before opening to recover the entire contents.

 Tel: 1-631-559-9269 1-516-512-3133

 Email: info@creative-biomart.com  Fax: 1-631-938-8127

 45-1 Ramsey Road, Shirley, NY 11967, USA

protein Refseq-Weblink	http://www.ncbi.nlm.nih.gov/protein/NP_000198.1
-------------------------------	---

Unit ID	P01308
----------------	--------

Unit ID-Weblink	http://www.uniprot.org/uniprot/P01308
------------------------	---

GENE INFORMATION

Gene Name	INS insulin [Homo sapiens]
------------------	------------------------------

Official Symbol	INS
------------------------	-----

Synonyms	INS; insulin; proinsulin; ILPR; IRDN; IDDM2; MODY10;
-----------------	--

Gene ID	3630
----------------	------

mRNA Refseq	NM_000207
--------------------	---------------------------

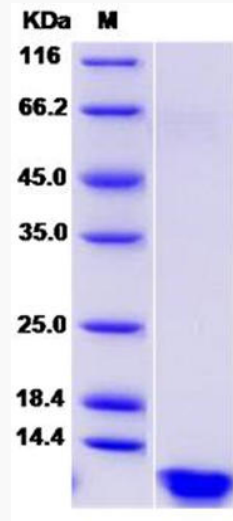
protein Refseq	NP_000198
-----------------------	-----------

 Tel: 1-631-559-9269 1-516-512-3133

 Email: info@creative-biomart.com  Fax: 1-631-938-8127

 45-1 Ramsey Road, Shirley, NY 11967, USA

SDS-PAGE



 Tel: 1-631-559-9269 1-516-512-3133

 Email: info@creative-biomart.com  Fax: 1-631-938-8127

 45-1 Ramsey Road, Shirley, NY 11967, USA