

Recombinant Human INS Protein, GST-tagged

Cat. No. INS-5100H Lot. No. (See product label)

SPECIFICATION

Product Overview	Human INS full-length ORF (AAH05255.1, 1 a.a. - 110 a.a.) recombinant protein with GST-tag at N-terminal.
Species	Human
Source	Wheat Germ
Description	After removal of the precursor signal peptide, proinsulin is post-translationally cleaved into two chains (peptide A and peptide B) that are covalently linked via two disulfide bonds. Binding of this mature form of insulin to the insulin receptor (INSR) stimulates glucose uptake. A variety of mutant alleles with changes in the coding region have been identified. There is a read-through gene, INS-IGF2, which overlaps with this gene at the 5 region and with the IGF2 gene at the 3 region. [provided by RefSeq
Molecular Mass	38.4 kDa
AA Sequence	MALWMRLLPLLALLALWGPDPAAAFVNQHLCGSHLVEALYLVCGERGFFYTPKTRR EAEDLQVGQVELGGGPGAGSLQPLALEGSLQKRGIVEQCCTSICSLYQLENYCN
Applications	Enzyme-linked Immunoabsorbent Assay Western Blot (Recombinant protein) Antibody Production Protein Array
Notes	Best use within three months from the date of receipt of this protein.

 Tel: 1-631-559-9269 1-516-512-3133

 Email: info@creative-biomart.com  Fax: 1-631-938-8127

 45-1 Ramsey Road, Shirley, NY 11967, USA

Storage Store at -80 centigrade. Aliquot to avoid repeated freezing and thawing.

Storage Buffer 50 mM Tris-HCl, 10 mM reduced Glutathione, pH=8.0 in the elution buffer.

GENE INFORMATION

Gene Name INS insulin [Homo sapiens]

Official Symbol INS

Synonyms INS; insulin; proinsulin; ILPR; IRDN; IDDM2; MODY10;

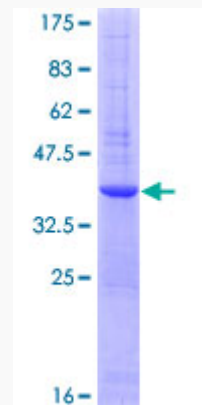
Gene ID 3630

mRNA Refseq NM_000207

Protein Refseq NP_000198

UniProt ID P01308

Quality Control Testing



12.5% SDS-PAGE Stained with Coomassie Blue

 Tel: 1-631-559-9269 1-516-512-3133

 Email: info@creative-biomart.com  Fax: 1-631-938-8127

 45-1 Ramsey Road, Shirley, NY 11967, USA