

## Active Recombinant Bovine INS protein, His-tagged

Cat. No. INS-560C Lot. No. (See product label)

### SPECIFICATION

<b>Product Overview</b>	Active Recombinant Bovine INS protein(P01317)(25~54 aa), fused with N-terminal His tag, was expressed in E.coli.
<b>Species</b>	Bovine
<b>Source</b>	E.coli
<b>ProteinLength</b>	25-54 aa
<b>Form</b>	Lyophilized from sterile 20mM Tris, 150mM NaCl, pH8.0, containing 1mM EDTA, 1mM DTT, 0.01% SKL, 5% Trehalose and Proclin300.
<b>Bio-activity</b>	<p>Insulin (INS) is a polypeptide hormone originating in the beta cells of the pancreas and serving as a principal regulator for the storage and production of carbohydrates. Insulin decreases blood glucose concentration. It increases cell permeability to monosaccharides, amino acids and fatty acids. It accelerates glycolysis, the pentose phosphate cycle, and glycogen synthesis in liver. Besides, Insulin Receptor (ISR) has been identified as an interactor of INS, thus a binding ELISA assay was conducted to detect the interaction of recombinant bovine INS and recombinant human ISR. Briefly, INS were diluted serially in PBS, with 0.01% BSA (pH 7.4). Duplicate samples of 100uL were then transferred to ISR-coated microtiter wells and incubated for 2h at 37°C. Wells were washed with PBST and incubated for 1h with anti-INS pAb, then aspirated and washed 3 times. After incubation with HRP labelled secondary antibody, wells were aspirated and washed 3 times. With the addition of substrate</p>

 Tel: 1-631-559-9269 1-516-512-3133

 Email: [info@creative-biomart.com](mailto:info@creative-biomart.com)  Fax: 1-631-938-8127

 45-1 Ramsey Road, Shirley, NY 11967, USA

solution, wells were incubated 15-25 minutes at 37°C. Finally, add 50μ stop solution to the wells and read at 450nm immediately. The binding activity of of INS and ISR was shown, and this effect was in a dose dependent manner.

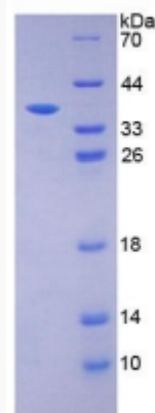
**Molecular Mass** 33.4kDa

**Purity** > 90% as determined by SDS-PAGE.

**Storage** Avoid repeated freeze/thaw cycles. Store at -20°C for 12 months. Aliquot and store at -80°C for 12 months.

**Reconstitution** Reconstitute in 20mM Tris, 150mM NaCl (pH8.0) to a concentration of 0.1-1.0 mg/mL. Do not vortex.

**SDS-PAGE**

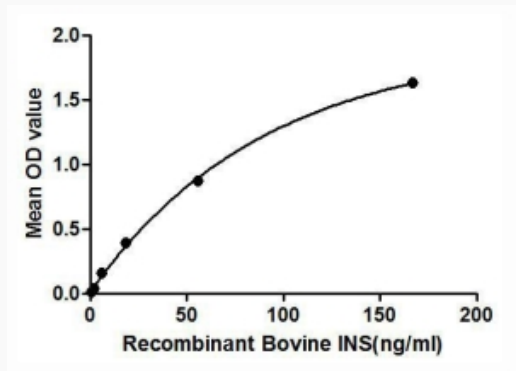


Tel: 1-631-559-9269 1-516-512-3133

Email: [info@creative-biomart.com](mailto:info@creative-biomart.com) Fax: 1-631-938-8127

45-1 Ramsey Road, Shirley, NY 11967, USA

**Activity**



 Tel: 1-631-559-9269 1-516-512-3133

 Email: [info@creative-biomart.com](mailto:info@creative-biomart.com)  Fax: 1-631-938-8127

 45-1 Ramsey Road, Shirley, NY 11967, USA