

Active Recombinant Mouse INS protein, His-tagged

Cat. No. INS-561M Lot. No. (See product label)

SPECIFICATION

Product Overview	Active Recombinant Mouse INS protein(P01326)(25~54 aa and 90~110 aa linked by GGGGS), fused with N-terminal His tag, was expressed in E.coli.
Species	Mouse
Source	E.coli
ProteinLength	25-54 aa and 90-110 aa linked by GGGGS
Form	Lyophilized from sterile 20mM Tris, 150mM NaCl, pH8.0, containing 1mM EDTA, 1mM DTT, 0.01% SKL, 5% Trehalose and Proclin300.
Bio-activity	<p>Insulin (INS) is a polypeptide hormone originating in the beta cells of the pancreas and serving as a principal regulator for the storage and production of carbohydrates. Insulin decreases blood glucose concentration. It increases cell permeability to monosaccharides, amino acids and fatty acids. It accelerates glycolysis, the pentose phosphate cycle, and glycogen synthesis in liver. Besides, Insulin Receptor (INSR) has been identified as an interactor of INS, thus a functional binding ELISA assay was conducted to detect the interaction of recombinant mouse INS and recombinant rat INSR. Briefly, INS were diluted serially in PBS, with 0.01% BSA (pH 7.4). Duplicate samples of 100 ul were then transferred to INSR-coated microtiter wells and incubated for 2h at 37°C. Wells were washed with PBST and incubated for 1h with anti-INS pAb, then aspirated and washed 3 times. After incubation with HRP labelled secondary antibody, wells were aspirated and washed 3 times. With the addition of</p>

 Tel: 1-631-559-9269 1-516-512-3133

 Email: info@creative-biomart.com  Fax: 1-631-938-8127

 45-1 Ramsey Road, Shirley, NY 11967, USA

substrate solution, wells were incubated 15-25 minutes at 37°C. Finally, add 50 μ stop solution to the wells and read at 450 nm immediately. The binding activity of of recombinant mouse INS and recombinant rat INSR was shown, the EC50 was 8.68 ug/ml.

Molecular Mass 10.3kDa

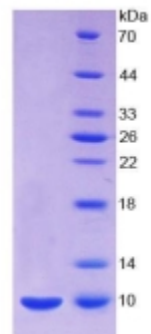
Endotoxin <1.0EU per 1 μ g (determined by the LAL method).

Purity > 97% as determined by SDS-PAGE.

Storage Avoid repeated freeze/thaw cycles. Store at -20°C for 12 months. Aliquot and store at -80°C for 12 months.

Reconstitution Reconstitute in 20mM Tris, 150mM NaCl (PH8.0) to a concentration of 0.1-1.0 mg/mL. Do not vortex.

SDS-PAGE

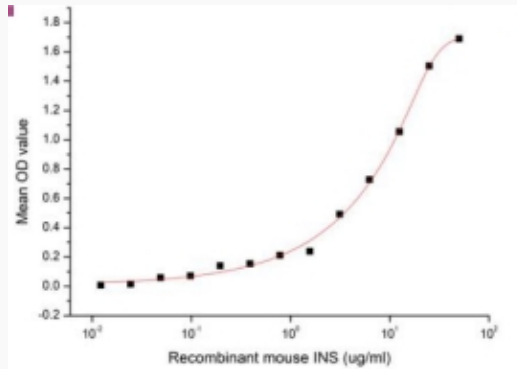


 Tel: 1-631-559-9269 1-516-512-3133

 Email: info@creative-biomart.com  Fax: 1-631-938-8127

 45-1 Ramsey Road, Shirley, NY 11967, USA

Activity



 Tel: 1-631-559-9269 1-516-512-3133

 Email: info@creative-biomart.com  Fax: 1-631-938-8127

 45-1 Ramsey Road, Shirley, NY 11967, USA