

Recombinant Human INS Protein

Cat. No. INS-61H Lot. No. (See product label)

SPECIFICATION

Product Overview	Recombinant Human INS Protein was expressed in E. coli.
Species	Human
Source	E.coli
Description	<p>This gene encodes insulin, a peptide hormone that plays a vital role in the regulation of carbohydrate and lipid metabolism. After removal of the precursor signal peptide, proinsulin is post-translationally cleaved into three peptides: the B chain and A chain peptides, which are covalently linked via two disulfide bonds to form insulin, and C-peptide. Binding of insulin to the insulin receptor (INSR) stimulates glucose uptake. A multitude of mutant alleles with phenotypic effects have been identified, including insulin-dependent diabetes mellitus, permanent neonatal diabetes diabetes mellitus, maturity-onset diabetes of the young type 10 and hyperproinsulinemia. There is a read-through gene, INS-IGF2, which overlaps with this gene at the 5' region and with the IGF2 gene at the 3' region.</p>
Form	Liquid. In 20 mM Tris-HCl, 150 mM NaCl, pH 8.0.
Molecular Mass	~12.8 kDa
AA Sequence	<p>HHHHHHMDDDDK FVNQHL CGSHLVEALYL VCGER GFFYTPKTRREAEDLQVGQVE LGGPGAGSLQPLALNAVEVLKREPLNYLPLEGSLQKRGIVEQCCTSICSLYQLENY CN</p>

 Tel: 1-631-559-9269 1-516-512-3133

 Email: info@creative-biomart.com  Fax: 1-631-938-8127

 45-1 Ramsey Road, Shirley, NY 11967, USA

Purity	>90%
Storage	Short Term Storage at 4 centigrade, Long Term, please prepare aliquots with 20% glycerol and store at -20 to -80 centigrade. Avoid freeze/thaw cycles.
Concentration	0.34 mg/ml
Official Full Name	Insulin

GENE INFORMATION

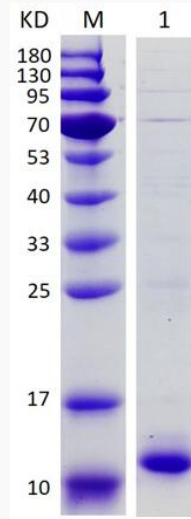
Gene Name	INS insulin [Homo sapiens (human)]
Official Symbol	INS
Synonyms	IDDM; ILPR; IRDN; IDDM1; IDDM2; PNDM4; MODY10
Gene ID	3630
mRNA Refseq	NM_000207
Protein Refseq	NP_000198
MIM	176730
UniProt ID	P01308

 Tel: 1-631-559-9269 1-516-512-3133

 Email: info@creative-biomart.com  Fax: 1-631-938-8127

 45-1 Ramsey Road, Shirley, NY 11967, USA

SDS-PAGE



12% SDS-PAGE analysis profiles of purified ProInsulin-58H (CBB stained).

 Tel: 1-631-559-9269 1-516-512-3133

 Email: info@creative-biomart.com  Fax: 1-631-938-8127

 45-1 Ramsey Road, Shirley, NY 11967, USA