

Recombinant Pongo pygmaeus INS1 Protein

Cat. No. INS-64P Lot. No. (See product label)

SPECIFICATION

Product Overview	Recombinant Pongo pygmaeus INS1 Protein was expressed in E. coli.
Species	Pongo pygmaeus
Source	E.coli
Description	<p>This gene encodes insulin, a peptide hormone that plays a vital role in the regulation of carbohydrate and lipid metabolism. After removal of the precursor signal peptide, proinsulin is post-translationally cleaved into three peptides: the B chain and A chain peptides, which are covalently linked via two disulfide bonds to form insulin, and C-peptide. Binding of insulin to the insulin receptor (INSR) stimulates glucose uptake. A multitude of mutant alleles with phenotypic effects have been identified, including insulin-dependent diabetes mellitus, permanent neonatal diabetes diabetes mellitus, maturity-onset diabetes of the young type 10 and hyperproinsulinemia. There is a read-through gene, INS-IGF2, which overlaps with this gene at the 5' region and with the IGF2 gene at the 3' region.</p>
Form	Liquid. In 1xPBS, PH 7.4.
Molecular Mass	~9.4 kDa
AA Sequence	FVNQHLCGSHLVEALYLVCGERGFFYTPKTRREAEDLQVGGQVELGGGPGAGSLQP LALEGLSLQKRGIVEQCCTS ICSLYQLENYCN
Purity	>90%

 Tel: 1-631-559-9269 1-516-512-3133

 Email: info@creative-biomart.com  Fax: 1-631-938-8127

 45-1 Ramsey Road, Shirley, NY 11967, USA

Storage	Short Term Storage at 4 centigrade, Long Term, please prepare aliquots with 20% glycerol and store at -20-80 centigrade. Avoid freeze/thaw cycles.
----------------	--

Concentration	0.2 mg/ml
----------------------	-----------

GENE INFORMATION

Gene Name	INS insulin [Pan troglodytes (chimpanzee)]
------------------	--

Official Symbol	INS
------------------------	-----

Synonyms	IDDM; ILPR; IRDN; IDDM1; IDDM2; PNDM4; MODY10
-----------------	---

Gene ID	449570
----------------	--------

mRNA Refseq	NM_001008996
--------------------	--------------

Protein Refseq	NP_001008996
-----------------------	--------------

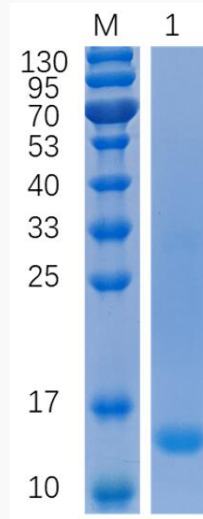
UniProt ID	Q8HXV2
-------------------	--------

 Tel: 1-631-559-9269 1-516-512-3133

 Email: info@creative-biomart.com  Fax: 1-631-938-8127

 45-1 Ramsey Road, Shirley, NY 11967, USA

SDS-PAGE



15% SDS-PAGE analysis profiles of purified INS-315H (CBB stained).

 Tel: 1-631-559-9269 1-516-512-3133

 Email: info@creative-biomart.com  Fax: 1-631-938-8127

 45-1 Ramsey Road, Shirley, NY 11967, USA